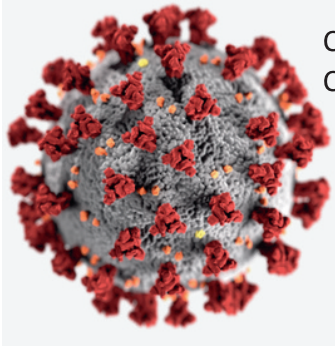
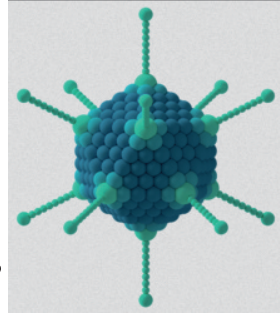


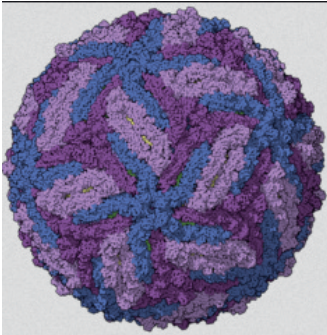
## Volume 38/2 April and May 2020



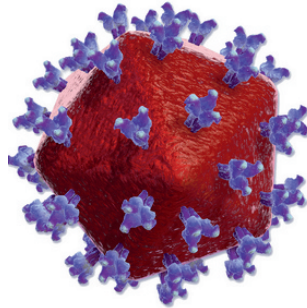
COVID-19  
CORONA VIRUS



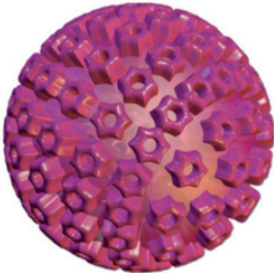
ADENOVIRUS



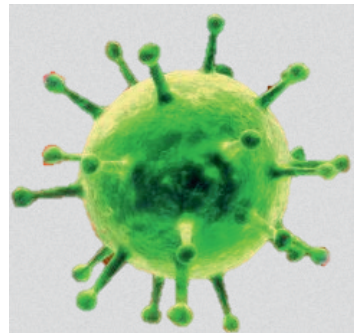
ZIKA



HIV



HERPES



MERS

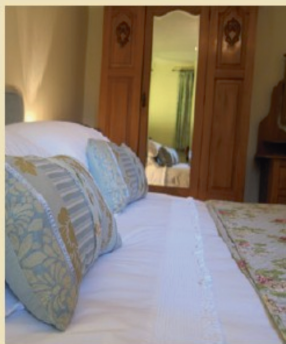
We have quite a good picture of these tricky customers  
we hope science and common sense can beat them

# The Creeping St. Mary Newsletter



# Upper Langdales Farmhouse Cottages

Creting St Mary, Suffolk



Retreat to our fabulous collection of lovely holiday cottages  
offering peace and tranquility in a beautiful location

Relax and enjoy the serenity of Suffolk

01449 721246 | 07789 458923 | [www.upperlangdalesfarmhouse.co.uk](http://www.upperlangdalesfarmhouse.co.uk)

## Editorial Comment

This year has brought much change as suggested in the "2020 and its All Change" last month - and this could not have been truer.

Several clubs, organisations and businesses have notified us on whether or how they are still operating. For those who have not - particularly the advertisers featured, please check out by phone or email if they are still operating; however things change by the day.

Covid19 or as many still call it Corona virus is a tricky customer - it is highly contagious and can be infectious before symptoms appear and these can be very mild in some, particularly younger people. The message to avoid the spread is common sense health advice - with a few knobs on: stay at home as much as possible; stay 2m from anyone - even family - as much as possible and strangers - always; wash hands with soap frequently; cover coughs and sneezes with a tissue and dispose of it in a bin immediately and clean surfaces often. This all reduces the risk of infection. The 70-year rule may insult the feelings of fit and healthy oldsters but people's immune systems do weaken with age and declining health. The young may feel immune and not take it seriously - or think they have had it after a mild symptoms and feel free to act normally - but it is still not clear if it can re-infect. Given this uncertainty it is best for everyone to be cautious.

Food shops are having a tough time keeping up with demand and sourcing supplies but are adapting. Suffolk Cheeses are offering a mobile food shop in the village on Tuesdays. Alder Carr Farm shop is open and self-isolators can phone or email orders for collection outside the shop. They will also deliver to vulnerable people in Creeping St. Mary and Needham Market.

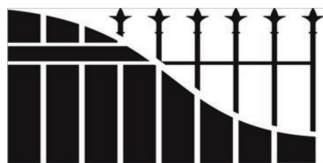
Living in a rural community, it is rather irksome that the media harp on about working from home and not travelling on the tube as if those are the only jobs people do. In rural areas this may be the exception which makes decision-making difficult - but common sense should prevail.

As at all times of crisis there are those who seek to take advantage of any weaknesses and no doubt there will be unscrupulous people offering help of one sort or another to vulnerable people with other ideas in mind. Unless you are sure, ask for help through the Parish Council (see p 11) rather than on-line offerings or cards through the letterbox. Be alert for scams and be to any attempts to 'bury bad news' in this period of uncertainty.

It is no excuse not to go out for a walk, while RSPB and SWT Reserves have closed - village footpaths and Blacksmith's Field remain open.

Many thanks to co-Editor Kathryn Martin, newsletter deliverers, contributors and advertisers. And Keep Safe.

***Joan Hardingham co-Editor***



**CLARKE  
FENCING LTD**  
TEL 01449 614939

For the best Fencing Products in East Anglia, why not come and visit our new premises:

**Unit 3, Stowmarket Business Park, Ernest Nunn Road, Stowmarket, IP14 2ED**

Not only have we expanded our premises but we have also expanded our product range:

Closeboard, Larch Lap, European Decorative Panels, Trellis, Post and Rails, Gates.

Sheds, Dog Kennels, Summer Houses and Children's Play Houses.

Electric Fencing for Horses and Cattle as well as Stock Fencing.

Decking, Planters, Picnic Tables, Sleepers.

Ironmongery, Wire Netting, Chainlink, Ronseal Preservatives, Tools.

Cement and Ballast, Ply Wood, Protective Clothing.

*\* Free No Obligation Quotations \* ~ ~ \* We Supply & Fit to Trade and Public \**

Email: [info@clarkefencing.co.uk](mailto:info@clarkefencing.co.uk)

**[www.clarkefencingltd.co.uk](http://www.clarkefencingltd.co.uk)**

**E&D Boiler  
Maintenance Ltd**



**LOCAL, PROFESSIONAL, ESTABLISHED SPECIALISTS IN**

**Oil, Gas & LPG**

**Servicing, Breakdowns, Repairs and Installations**

**All makes covered including:**

**Grant, Worcester Bosch, Boulter Camray, HRM Wallstar, Vaillant, Baxi.**



Upper Church Farm, Finningham Road, Rickinghall, Suffolk, IP22 1LP

**Telephone  
01379 898574**



[www.boilerrepairsuffolk.co.uk](http://www.boilerrepairsuffolk.co.uk)

## CREETING ST MARY PARISH COUNCIL NEWS

### **Coronavirus (Covid-19)**

The Parish Council hope you are all keeping safe with the current situation. Please remember to contact us if you need help during the coming weeks. There are currently 52 helpers on the list, so please, contact a member of the Parish Council if you need assistance with anything.

In relation to Parish Council meetings, including the Annual Parish Meeting (APM) please keep an eye on our website/Facebook page for possible changes to dates and times. Temporarily our meetings may need to take place 'virtually' rather than in person. Please check for further information.

**Please Note – that the current date for the APM of 27th April has been changed. The new date is 20th May – this may be a virtual meeting.**

### **Traffic Calming - through the village**

The location for the second VAS site has been agreed for All Saints Road. Once the post has been installed the VAS speed sign will be ordered.

The VAS ( Vehicle Activated Speed Sign) on Jacks Green Road has been a success with vehicles notably slowing down when approaching it. It all helps to slow traffic through our village.

### **County Councillor's Report**

#### **New street lighting proposed to reduce the county's carbon footprint –**

Suffolk County Council (SCC) is looking to reduce its carbon footprint by investing £9.8m in street lighting, after Cabinet approved an LED street lighting replacement project. Following a review of its street lighting policy in 2010, and with energy prices set to increase at between 8% and 12% a year, the Council has decided the high energy consumption of its existing lanterns could create further pressure on its resources in the near future. The Council owns and maintains over 60,000 streetlights. The proposal to convert the remaining street lighting stock to LED will help to reduce both Suffolk's energy consumption and carbon footprint, whilst providing crisper illumination of the streets for residents.

#### **County Council approves budget to spend more on services for vulnerable residents -**

On 13 February 2020, SCC approved its annual budget. The Council will increase its spending power again this coming financial year, particularly in Children's and Adults services, where demand continues to rise year on year. In 2020/2021, the Council's budget will rise to £556million which represents an increase of £37m (7.1%) from 2019/20. We are taking the measured decision to raise council tax by 1.98 per cent and implement a 2 per cent rise in the Adult Social Care Precept, which is ring-fenced for use within our highest demand service. Children's and Adults Services represent around 70% of the Council's overall spend. This year's budget is based on a 12-month financial settlement from government, rather than the three or four-year agreement which is usually offered. As well as addressing the need to maintain funding for key services, the Council will invest an additional £3.5m into two one-year programmes, the Suffolk 2020 fund (£3m) and a highways



## Andrew Bingham

INDEPENDENT FUNERAL SERVICE

Local Caring Independent Funeral Service

24 Hour Personal Service

Qualified

Experienced

[www.andrewbingham.co.uk](http://www.andrewbingham.co.uk)

01449 771666

The Nutshell, Milton Road South, Stowmarket, IP14 1EZ



Golden Charter  
Funeral Plans



Helping Hands  
Handyman Service

All aspects of Home & Garden Maintenance carried out

Painting & Decorating

Tiling

General DIY

Decking, Patios & Fencing

Any type of work considered  
No Job too small - need a helping hand?

Call Kevin

01473 839006 - 07513107911



## CHIMNEY SWEEP

ECO SWEEP  
CHIMNEY SERVICES

- NEW POWER SWEEPING METHOD USED FOR A MORE THOROUGH CHIMNEY CLEAN THAN BRUSHES.
- INDUSTRIAL HEPA FILTERED VACUUM.
- FULLY INSURED.
- INSURANCE RECOGNIZED CERTIFICATES ISSUED.
- SPOTLESS, RELIABLE AND FRIENDLY SERVICE.
- ALL CHIMNEYS, WOOD BURNERS, AGA, BOILER FLUES SWEEP.
- GUILD OF MASTER SWEEPS CERTIFICATED MEMBER.



Power sweeping



TEL. 01359 232335

investment fund (£500k).

**The Suffolk 2020 fund will be used for projects that can deliver a real difference for local communities.** The intention is to adopt good ideas covering more than one area of Suffolk. To qualify for the fund, projects must link to one of the following themes: carbon reduction; carbon offset, road safety, natural environment; built environment; innovation; and use of technology. Each project must offer a clear return on investment through positive economic, social, or environmental impact. The £500k highways investment fund will focus on improving the safety of pupils and parents travelling to and from school, by refreshing lines and cleaning and repairing signs in and around school zones.

**Suffolk Highways waives fees for VE and VJ Day Commemoration events** - In commemoration of the 75th anniversary of Victory in Europe and Victory over Japan Days, Suffolk Highways has confirmed it will waive road closure application fees and help support communities with event traffic management. Matthew Hicks - County Councillor for the Thredling Division  
Tel : 01728 628176 Mob : 07824 474741 E-mail :  
matthew.hicks@suffolk.gov.uk

### **District Councillor's Report**

**Budget approval** - On Thursday 27 February Mid Suffolk District Council approved its budget for 2020/21, including an increase in council tax that will see £2.76 a year added to the bill of a Band D property.

**Needham Market on track for bright future** - Needham Market railway station is set to receive £380,000 in government funding to improve accessibility. The funding from the Department of Transport, new Access for All programme will benefit Needham Market, giving it a further boost to the council's plans to regenerate Needham Market station and improve access to the station's Ipswich-bound platform.

**Helping ratepayers high on the agenda** - The introduction of a local discretionary discount for pubs, to update the current retail discount policy and to extend the local newspaper discount was agreed at Mid Suffolk's cabinet meeting last month, and will be implemented when the Government provides more details of the schemes to support ratepayers across both districts.

**Avoiding unnecessary plastic is getting easier in Suffolk.** A number of shops in Suffolk are offering refills for a host of household items in a bid to cut down on the amount of plastic and packaging we use.

Suffolk District Councillors Mike Norris [mike.norris@midsuffolk.gov.uk](mailto:mike.norris@midsuffolk.gov.uk) Tel. 01449 720871 and Steve Phillips [stephen.phillips@midsuffolk.gov.uk](mailto:stephen.phillips@midsuffolk.gov.uk) Tel. 01449 721710.

### **Planning Applications Considered**

Ref: DC/20/00209 - Planning Application - Erection of stable block for domestic use - Land NW Of, All Saints Road, Creeping St Mary – No Objections  
Ref: DC/20/00354 - Planning Application - Redevelopment of Existing Petrol Filling Station; Removal of Existing Sales Building, Canopy, Tanks, Pumps and

# GUDGEONS PRENTICE

SOLICITORS

TELEPHONE: (01449) 613101 | EMAIL: [info@gudgeons-prentice.co.uk](mailto:info@gudgeons-prentice.co.uk)

BUTTERMARKET | STOWMARKET | SUFFOLK | IP14 1ED

[www.gudgeons-prentice.co.uk](http://www.gudgeons-prentice.co.uk)

GUDGEONS PRENTICE are local solicitors and specialist in:-

Wills and Probate

Powers of Attorney

Residential Conveyancing and Commercial Property

Landlord and Tenant

Divorce, Financial Matters, Separation, Child Welfare and Other Family and

Matrimonial Matters



**PROPOSED FOOT PATH (red lines) AND SINGLE CARRIAGEWAY  
ROAD LAYOUT WITH PRIORITY SYSTEM ON FLORDON RD**

Jet Wash. Provision of New Sales Building, Forecourt, Canopy and Underground Tanks, Repositioning of HGV Forecourt, New Car and HGV Parking and Associated Works - Shell Needham Market, Norwich Road, Coddensham – No Objections

Ref: DC/20/00289 - Planning Application. Erection of a petrol filling station (PFS), associated store and 2no. drive thru's and creation of new vehicular access - Land At Norwich Road, Coddensham, Suffolk – Object due to dangerous access and environmentally unfriendly lighting

### **Recent Planning Application Decisions**

Ref: DC/19/04868 - Outline Planning Application (some matters reserved-access and layout to be considered) - Severance of garden and erection of 2No dwellings - Orchard Haven, All Saints Road, Creting St Mary – Granted

Ref: DC/19/05701 - Full Planning Application - Use of land for the siting of a mobile home for a farm manager - Suffolk Farmhouse Cheeses, Whitegate Farm, Norwich Road, Creting St Mary – Refused

Ref: DC/19/05926 - Householder Planning Application - Erection of ancillary storage building - Riverside Barn, Kettle Lane, Creting St Mary – Granted

Ref: DC/19/05861 - Outline Planning Application (Access to be considered all other matters reserved) - Erection of 1no. dwelling and cartlodge - The Elms, Green Lane, Creting St Mary - Refused

**Jennie Blackburn (Parish Clerk) – 01449 721369 / [clerk.csmpp@yahoo.co.uk](mailto:clerk.csmpp@yahoo.co.uk)**

Details of forthcoming meetings and copies of Parish Council Meeting minutes can be found on the village web-site. For concerns or queries for the Parish Council, please contact the Parish Clerk or come to the next meeting.

### **\*\*STOP PRESS\*\***

#### **PROPOSED SINGLE CARRIAGEWAY ROAD LAYOUT ON FLORDON RD NEAR ST. MARYS GARDENS.**

Planning Applications: DC/18/05601 & DC/19/05466 J Breheny  
A traffic priority scheme ( see plan p. 8) on a blind corner on the narrowest part of Flordon Road is proposed to provide a footway to discharge of conditions for the above planning application (to provide pedestrian access to Needham Market or Creting St Mary village school and community centre) for residents of this development. We have currently only this partial plan as suggested by Highways but it clearly creates enormous problems.

The footpath (red lines) appears to divert into the road which is then narrowed, only allowing a single lane with a priority system on this blind corner where HGV traffic will pass very close to pedestrians. This proposal is a complete change from the original in the planning application (above) which was given a public hearing in the Village Hall. The Village should be extremely concerned about the effect this will have on traffic using Flordon Rd. Please contact your Parish Council with your concerns



## **Farm Shop & Deli, Cafe & Crafts**

### **Farm Shop and Butchery are open**

We are still supplying a wide range of produce, including locally sourced meat from our newly opened butchery. The craft units and Barn Cafe are unfortunately closed for the time being.

We would like to thank all our customers for their support and understanding. We are currently limiting the number of people that enter the farm shop at one time for all our safety, and ask that people observe the 2m. "social distancing" and don't enter if unwell. Please also reduce the number of people in your group that enter the shop to one if possible.

#### **Covid-19 Support**

To support our vulnerable and self-isolating customers we are offering a non-contact collection service from the shop. Email or ring us with your order. We will contact you for payment over the phone, and say when your order will be available to collection. On arrival telephone to let us know you are here, and we will bring it to your car, or the car park pick up point.

We are also offering a limited home delivery to vulnerable & self-isolating residents of Creting St Mary & Needham Market. Please call or email for further information on: [farmshop@aldercarrfarm.co.uk](mailto:farmshop@aldercarrfarm.co.uk). t: 01449 720820

Barn Cafe | Plant Centre | Pottery & Gift Shops  
Nature Trail | Picnic & Play Area | Farm Animals

Alder Carr Farm, Creting St Mary, Ipswich, Suffolk, IP6 8LX.  
[www.aldercarrfarm.co.uk](http://www.aldercarrfarm.co.uk) 01449 720820 [farmshop@aldercarrfarm.co.uk](mailto:farmshop@aldercarrfarm.co.uk)

## **Letter to all Creeting St. Mary residents on behalf of the Parish Council**

Depending on what happens over the next few weeks, support at a community level is likely to be vitally important.

As such, the Parish Council want to make sure that everyone who needs help in the parish can get it and all those who are willing to help can give it.

If you can help a neighbour with:

- Picking up shopping ,
- A friendly call/text
- Posting mail
- Urgent supplies

Please contact one of the below so we can collate the details and ensure that no one is left alone or missed.

### **NEED HELP?**

Please get in touch, there will be someone there for you.

Hugo Craggs: 07815 137228 hugocraggs@gmail.com

Lesley Plummer: 07889 272856 andaxi@btinternet.com

Sue Haynes: 01449 722570 susannehaynes@talk21.com

Jan Palmer: 01449 723997 creetingtog@gmail.com

Chris Emmins: 07894 231165 chrisemmins@offshorenrg.com

Roger Coton: 01449 721526 rogercoton@btinternet.com

Paul Scully: 01449 721461 paul@impressions41.plus.com

Jennie Blackburn: 01449 721369 clerk.csmmpc@yahoo.co.uk

We hope that none of this will be needed, but there is an increasing chance it might be. If you can help a neighbour in need, please get in touch.

We have a Creeting St Mary Parish Council Facebook page where these details will also be posted. <https://www.facebook.com/Creeting-St-Mary>

***ED: as mentioned in the Editorial if you are unsure of an approach you have had offering help please consult the people on the list above.***

**Delicious  
homemade  
cheeses, Guernsey  
milk and home-  
reared beef.**



Sales off-farm Fri 4-6pm, Sat 3-5pm or  
collection by prior arrangement.

**Whitegate Farm, Norwich Road, CSM**

## **SUFFOLK CHEESES**

Following recent developments, we  
have decided to offer a mobile farm  
shop facility, so I hope that it isn't  
too late to put a notice in the  
newsletter.

We will be at the Village Hall every Tuesday at 10am with a selection of  
produce including milk, butter, cream, cheeses, eggs, bread, fresh  
vegetables and meat, which we will be selling from our livestock trailer.

For those self-isolating, we will be able to deliver to the door, please call  
Katharine 07931 512790 to arrange this.

## **CREETING SAINT MARY WELFARE CHARITIES**

The Creeting Saint Mary Welfare Charities Trust can provide  
assistance for those in need, hardship or distress by reason of, age,  
illness, unemployment, the need to continue in further or higher  
education.

### **SOME EXAMPLES OF POSSIBLE GRANTS**

Annual grants to those receiving state pension in financial need.

Grants toward the relief of general hardship.

Grants for students who are in higher or further education.

Help with aids to cope with disability not available from state funding.

Grants towards maternity costs.

Grants towards funeral expenses.

Help towards cost of personal Pendant Alarms for the elderly.

The Trust is intended to benefit the residents of Creeting Saint Mary,  
however, in exceptional circumstances the Trustees may consider  
applications from persons who are resident outside the Parish.

**TRUSTEES:** Mr. P. Stephenson ( Chair ) Mr. D. Primmer (Hon. Clerk )

Mrs. M. Aldred, Mrs. P. Day, Mrs. K. Martin,

Please make any enquires to :

**Mr. D. Primmer, 30 All Saints Road, IP6 8NF Telephone 01449 721514**



# From the Rectory

Rev. Phillip Payne

## Consider the Lilies of the Field

There are no lilies in the garden yet, but as each day passes the view from the Rectory becomes more spring-like. Clumps of white snowdrops, the nearest we have been to snow all winter, continued to delight well into March. Brightly coloured daffodils and hellebores, dogwood and willow, ivy, small violets and much more brighten the view. Amidst all this colour; busy birds flit back and forth, insects rise up with the sun, the squirrels rarely rest. Out of the gloomy quagmire of winter, spring is emerging and Easter approaches. Jesus said to his disciples, I tell you, do not worry. ... Consider the lilies of the field, they neither sow nor reap; yet even Solomon in all his glory was not arrayed like one of these. If that is how God treats the grass, how much more will he care for you. This is not a whistle-in-the-dark sort of optimism, a denial of reality. The Palestine of 2000 years ago was a dangerous place and Jesus knew he was heading inexorably toward his own painful betrayal and execution.

It has been a funny winter; warm, wet and windy and in some places highly destructive. Thankfully, in our little corner we have escaped the worst. Spring, the annual season of rebirth, is with us, yet anxiety lingers. There is, in truth, much to be anxious about; yet Jesus tells us not to worry. His confidence was built on a relationship with his

heavenly father that would carry him through the pain of betrayal and death to a new and brighter life beyond – the new life we celebrate at Easter. Between them, Good Friday and Easter invite us to reflect first on the depth of suffering he carried for us, then the joy of rebirth into eternal life which he offers to share. The Day of Resurrection will soon be here.

Meanwhile, enjoy today's blessings; there may not be lilies, yet, but our gardens, churchyards and hedgerows alike offer plenty to brighten our day, much to give us hope – if we but pause and consider.

Rev'd Philip Payne, Priest-in-Charge North Bosmere Benefice

The Rectory, The Street, Stonham Aspal, IP14 6AQ  
01449 711684 [revphilppayne@btinternet.com](mailto:revphilppayne@btinternet.com)



Helebore *Helleborus niger*



## CHURCH SERVICES

St. Mary's Church,  
Creting St Mary

St. Peter's Church  
Creting St. Peter



### St Mary's Church, Creting St Mary

**Unbelievably, the Church of England authorities have felt it essential to cancel all services in the churches for the foreseeable future. This means that our greatest festival, Easter, is included and all the other services in Easter week.**

We have, however, decided that our church will be open every Sunday as a haven of peace in these worrying times, between 10 am and 4 pm.

**At Easter, it will be open on the Monday for anybody to go in, and these will be opportunities to sit quietly away from the world if you wish.**

The Lilies in memory of loved ones will be, as promised, beside the altar (provided they are obtainable).

We pray that measures to control the virus will prove successful, you will all remain healthy, and life will soon return to, something approaching normality.

#### Village Hall Dance:

The dance on the 25<sup>th</sup> April has been cancelled, and it is likely that the one on the 30<sup>th</sup> May will be as well.

For further details of services please see contacts page at the end of the magazine

**Church Warden.** Please note Creting St. Mary church currently has no Church Warden

## **St Mary's Church the new roof**

Creeting St Mary PCC is delighted to report that the re-roofing of the Church has been completed, replacing a roof that had been untouched for many decades. The work, in two phases, began in April 2017 with the roof of the north aisle, and was completed in the autumn of 2019. We are grateful to the diocesan architect, David Whymark, and to Bayes Roofing Ltd for an excellent and efficient job.

The total cost was just over £79,600 (including VAT), and of course we were able to afford the work only because of contributions from many generous donors. We should like to thank the following foundations and trusts for their help:

Viridor Credits	£13,600
Garfield Weston Foundation	£7,500
Suffolk Historic Churches Trust	£6,000
Geoffrey Burton Trust	£2,500
Ganzoni Charitable Trust	£2,500
Listed Places of Worship Grant Scheme	£12,700.

In addition, it gives great pleasure and satisfaction to say that private donors in and around the Village, as well as further afield, and a number of special fund-raising events contributed between them £24,700. One or two of the individual donations were exceptionally generous. The balance of about £10,100 came from the PCC's accumulated Fabric Fund, now much depleted of course.

Thank you, most sincerely, to you all!

**David Haynes** *PCC Treasurer*

## **Creeting St, Mary Voluntary-aided Primary School CLOSED UNTIL FURTHER NOTICE AS ARE ALL SCHOOLS**



**Head Mrs. Christine Friar**  
school telephone  
01449 720312  
[office@creetingstmary.suffolk.sch.uk](mailto:office@creetingstmary.suffolk.sch.uk)  
[www.creetingstmary.suffolk.sch.uk](http://www.creetingstmary.suffolk.sch.uk)



## **CREETING ST MARY SOCIAL CLUB (CSMSC)**

**csm\_socialclub@outlook.com**

### **Social Club**

After a really promising start to the year with a pancake lunch attended by nearly 50 people, who enjoyed 3 savoury fillings as well as traditional sweet pancakes, it is most disappointing to have to report the postponement of all our programme for the next 3 months at least. Our second lunch time meeting on March 19th was cancelled at short notice, following government advice, and the planned Eastern Angles production of Red Skies on April 3rd was called off the next day. We hope to re-schedule both these events later in the year when normal life resumes. I would like to thank the newsletter deliverers who pushed the Red Skies flyers through all the doors in a separate and as it proved unnecessary exercise.

We are all having to adjust rapidly to quite drastic changes on a day to day basis at present.

The club committee are not short of enthusiasm or ideas for events and we will definitely be bringing more activities to our village social life as soon as we are able to do so safely. Meantime we are working on an upgrade to the bar storage area and are grateful for a grant from Mid Suffolk Locality Fund for some money towards the cost of this work.

I should like to thank all those who helped at the Pancake Lunch, both committee members and several WI volunteers too. A real community effort.

***Kathryn Martin.***

### **CREETING ST. MARY WILDWOOD**

The Parish Council have been offered the opportunity to take over the care of a piece of land, the Wildwood'. This starts from a footpath off Florden Rd, wending it's way down to Needham Lake. The legalities have yet to be sorted but, once that happens we are hoping it becomes a reality.

The idea is to have the Parish Council as a body, as the Trustees. Hopefully then to form a group of people, independent of the Parish Council, interested in it's maintenance to maintain it. If you feel you would be interested in this do contact Jennie Blackburn or myself.

The PC visited the site which has had some tree planting but generally is regenerating naturally bringing wildlife, bird song and unusual plants including large number of orchids

***Sue Haynes***

**The Diamond Jubilee Village Hall**  
**CLOSED UNTIL FURTHER NOTICE**  
**AS ARE ALL VILLAGE HALLS**

If you need a venue for your Event, the Diamond Jubilee Hall is available to hire. It consists of the main hall, lounge with bar, a small meeting room and a kitchen. All these can be hired separately. There is WIFI and a large car park behind the Hall. Details and bookings can be found or made on the village website or contact Richard Hyde, Booking Clerk , 01449 720024

**VILLAGE OUTING**

**To SAVILL GARDENS (Windsor Great Park) and WINDSOR CASTLE**

This has been planned for JUNE 30th

**However it is very likely that it will be postponed**

Leaving the village at 8am returning Approximately 7.30pm

£50 including entrances to Gardens and Castle

£30 deposit and early booking ASAP please.

**Pam Day 720057**

**BLACKSMITH'S FIELD**

This is open but please observe Government advice about 'social distancing'. William Barnes is cutting the 'hay meadow' area. This will be cut twice this year to try and control the ragwort. This will mean no hay but, hopefully if we also do some pulling, (volunteers welcome!) but it means we can have hay that can be used next year

***Sue Haynes***

**Opportunity for a Communications Volunteer**

Creeping St Mary Social Club are looking for someone who would be prepared to help the committee with publicity for club and village events. Expertise and familiarity with social media is the main requirement for this task so that we can spread information about our activities and encourage more people to join us. It should not take a great deal of time. Good communication skills are what we are looking for.

Please contact Kathryn Martin or Jacqui Mann or email the club.

## The Corona Litter Pick

On Sunday 15th March 14 volunteers gathered at the Village Hall to start a clean up operation throughout the village. This was a productive effort with many old feed sacks being filled with litter, and my impression was that it was a little cleaner than previous occasions, though there were inevitably some black spots. Unfortunately the group set off before we had a chance to take a group photo, but when we run a repeat pick in the autumn we will record the gathering and also open the bar for a drink afterwards.

I should like to thank all those who helped out on this event.

The title comes from the discovery of an empty Corona bottle in Low Lane which seemed somehow appropriate at this time.

**Kathryn Martin.**



*What can be 'eco' about chucking a car part in the hedge?*

## MOBILE LIBRARY

Route 13 to Creting St. Mary

### **CANCELLED UNTIL FURTHER NOTICE AS ARE ALL LIBRARIES**

Suffolk Libraries' mobile library stops at Whissel's Farm at 11.20-11.30 and outside 30 All Saints Road at 11.35-11.45 on Friday every four weeks.

This year they are Jan 24, Feb 21, March 30, April 17, May 15, June 12, July 10, August 7, Sept 4, Oct 2 and 30, Nov 27 with no visit in December.

You can join (for free) or renew membership and there is a reasonable selection of books on board. Books can always be ordered from the main library. This somewhat under-used service can be a lifeline to many - we should support it.

<https://www.suffolklibraries.co.uk/mobiles-home/ipswich-mobile-library-route-13/>



## DR DAN POULTER MP

Member of Parliament for Central Suffolk and North Ipswich

Perhaps it is because I am an NHS doctor myself, but ever since I was first elected as an MP almost 10 years ago, I have always taken a very keen and protective interest in Ipswich Hospital.

My first battle on behalf of local patients was to fight to keep cardiac services based at Ipswich Hospital, and to ensure that people with a heart attack would not have to travel many miles for life saving treatment. We won that battle and I was pleased to play my part in helping to gain funding for the new cardiology unit.

Since then, Ipswich and Colchester Hospitals have merged. Understandably, hospital mergers can cause anxiety and of course, there can be challenges, but in my view, this particular merger has largely been a success. Ipswich Hospital will soon see further improvements to its Accident and Emergency department, and there will be a new purpose built elective surgical unit for orthopaedic patients at the Colchester site.


This new elective surgical unit does not mean that patients in Suffolk will be missing out, but quite the opposite as instead, it will help to improve and expedite care. Far too often during the busy winter periods, patients from Suffolk awaiting a hip or knee operation unfortunately have operations cancelled due to bed capacity issues. Emergency orthopaedic operations and all follow up care will still take place at Ipswich Hospital, but the new and dedicated elective unit will mean fewer cancelled operations, which can only be good news for patients waiting in pain and discomfort for their operations.

At a recent visit with Ipswich Hospital Chief Executive, I was shown around the newly commissioned isolation pods for people presenting themselves with possible Coronavirus symptoms and to learn more about the plans in the event of any cases in Suffolk. These isolation pods are ready for use in every general hospital around the country and our clinical professionals are very well prepared to deal with potential cases.

Understandably, people are becoming increasingly concerned about the potential for Coronavirus to arrive in Suffolk, but it's important not to worry too much. Our NHS is in a good place and our local health services are well prepared. The best way of helping to stop the virus spreading is by ensuring good hand hygiene measures – washing your hands regularly, for at least 20 seconds and covering your mouth or nose with a tissue when you cough or sneeze and disposing of the tissue in the bin. Further advice is available from NHS Online ([www.111.nhs.uk](http://www.111.nhs.uk)) – if you think you may have coronavirus, or have been in touch with someone who has the virus, do not go to a GP surgery, pharmacy or hospital, but first call 111 for advice.

Tel: 0207219 7038 [www.drdanielpoulter.com](http://www.drdanielpoulter.com)  
[daniel.poulter.mp@parliament.uk](mailto:daniel.poulter.mp@parliament.uk)

# Treating Your Infection

<i>Your Infection</i>	<i>Without antibiotics most are better by</i>	<i>How to look after yourself and your family</i>
Middle-ear infection	8 Days	<ul style="list-style-type: none"> <li>• Have plenty of rest,</li> <li>• Drink enough fluids to avoid feeling thirsty.</li> <li>• Ask your local pharmacist to recommend medicines to help your symptoms or pain (or both),</li> <li>• Fever is a sign the body is fighting the infection and usually gets better by itself in most cases. You can use paracetamol if you or your child are uncomfortable as a result of fever.</li> <li>• Use a tissue and wash your hands well to help prevent spread of your infection to family, friends and others you meet,</li> <li>• Things you can do to treat your common condition can be found via the Practice website  econsult service or the NHS website.</li> </ul>
Sore throat	7-8 Days	
Sinusitis	14-21 Days	
Common cold	14 Days	
Cough or bronchitis	21 Days	

**Never share antibiotics and always return any unused antibiotics to a pharmacy**

For more information on minor conditions visit:  
<http://www.nhs.uk/Livewell/Pharmacy/Pages/Commonconditions.aspx>  
<http://www.ipswichandeastssuffolkccg.nhs.uk/Yourhealth/Stayinghealthy.aspx>



# Pop-Up Chinwag



**CANCELLED**

Needham  
Market

A monthly social group for people aged 65+  
in Needham Market & surrounding areas.

## **First Wednesday of every month**

The Burton Room  
Needham Market Community Centre  
School Street  
Needham Market, IP6 8BB  
2pm - 4pm

FREE Entry - donations welcome  
Enquiries: 01473 298683



**07786 381682**

## **Anglia Garden Design & Landscaping**

For a friendly service call Sharon

**07786 381682**

[www.angliagardendesign.com](http://www.angliagardendesign.com)

**WILLIAM J CROCKER**

PAINTING &  
DECORATING  
SERVICE



TEL: 07814 240840

[WWW.WJCPAINTERS.CO.UK](http://WWW.WJCPAINTERS.CO.UK)

EMAIL: [WJCPAINTERS@HOTMAIL.CO.UK](mailto:WJCPAINTERS@HOTMAIL.CO.UK)



## **REGISTERED OSTEOPATH**

Louise Mallender BSc (Hons) Ost Med

Back & Neck Pain, Joint Problems,  
Repetitive Strain, Poor Posture  
Muscle Tension,

Station Yard, Needham Market, IP6 8AS

**01449 678250 07789 935190**

email: [louisemallender603@hotmail.com](mailto:louisemallender603@hotmail.com)

[www.ineedosteo.co.uk](http://www.ineedosteo.co.uk)

Registered with the General Osteopathic Council

## **A Bit of History**

In this month's issue of the Newsletter and in the midst of trying times for us all, including schools, I thought I'd write a heavily edited history of Creeting St Mary's primary school. At the last History Day at the Diamond Jubilee Village Hall in July 2018, on display was a comprehensive history of the school and it is from this that I'm writing the following – I hope it will be of interest to the current pupils, assuming they read the Newsletter of course!

On Wednesday, October 4th, 1871, the original building of Creeting St Mary Church of England Voluntary Aided Primary School was officially opened but did you know that some time before the school had originated as a Sunday School? This was originally held in Creeting St Mary Church but in 1837, when the Rev. John Briggs was Rector, a building in the churchyard was erected to accommodate the children – this building is now the vestry and the year, 1837, is recorded on a stone plaque above the entrance.

Forward to 1871 and at one o'clock in the afternoon the Archdeacon of Suffolk, the Rector of Creeting St Mary, parents, parishioners and neighbours joined the eighty children already gathered in the schoolroom. After the Archdeacon had opened the school by Prayer, the Rector said Grace and the children sat down to a celebration dinner. The playground was very small and was divided by a fairly high wall to segregate the boys from the girls, or at least this was the intention but it is recorded that on occasions boys were kept in as punishment for invading the girls' playground! Morning playtime for the children was first introduced in 1889 and afternoon play was made compulsory in 1897. At the turn of the century the land at the back of the school was given. It was originally used for garden plots and later was made into the playing field.

Reasons for absenteeism differed a great deal from those of today. Amongst those recorded were: "taking father's dinner, mother's washing, mother's brewing, pig keeping, minding sheep, potato picking, bean stalk pulling, leading horse and stone picking". I wonder what children would think today if they were asked to lend a hand with any of those chores!

Around the time of the Second World War, some changes had a great impact upon the school. In 1937, a hundred years after the original classroom had been established in Creeting St Mary churchyard, the senior children were transferred to the new Area School at Needham Market. Although the numbers of children attending Creeting St Mary School dropped to forty six as a result of this re-organisation, this number was increased in 1939 at the outbreak of war when the first evacuees arrived from London. In 1940 the Education Authority agreed that in the event of air raids the children might go to the shelter at the Rectory if time permitted and if not they were to take cover under their school desks. All children were required to take their gas masks for inspection on the first Tuesday of every month. The end of the war in 1945 was celebrated by a holiday on May 8th and 9th, V.E. Day.

In the next Newsletter issue, I'll provide a bit more detail - unless the children do it for me!

**Paul Scully**

Tel: 01449 721461 e-mail: [paul@impressions41.plus.com](mailto:paul@impressions41.plus.com)

## Footpaths and Bridleways

I have asked Material Change if they would put some tree bark along the river-end of the footpath running past theirs. They did try earlier this year but it was so water-logged they deferred it. I must say I've not seen it so bad as it is in quite a while.

Otherwise, the parishes FPs are as you would expect, muddy & slippery so go carefully. I was asked to check out the bridge at the other side of the field downhill from Kay's gate. It's fairly narrow and can be slippery so an additional hand-rail and chicken wire tacked to the floor would make it safer – other than a new bridge of course!

Now I must tell you about something else I've been thinking about lately although it's nothing to do with footpaths – although it could be I suppose. I hear a lot about Facebook and how good it is but I don't really understand why it exists and am trying to make friends outside Facebook while following the same principles.

You've possibly seen me, every day, walking around the village, chatting to people I pass, telling them what I've eaten, how I feel at the moment, what I've done the night before and what I intend to do later that day and so on. I give them pictures of my family, of my car, of me watering the garden, standing in front of landmarks, driving around town, having lunch and doing what anybody and everybody does every day. I also listen to their conversations, give them the "thumbs up" and tell them I "like them" And it works just like Facebook! I already have 4 people following me – 2 police officers, a private investigator and a psychiatrist.

**Paul Scully**

Tel: 01449 721461 e-mail: [paul@impressions41.plus.com](mailto:paul@impressions41.plus.com)



**Friendly Badminton**  
**CANCELLED UNTIL FURTHER NOTICE AS THE**  
**COMMUNITY CENTRE IS CLOSED TO ALL ACTIVITIES**  
**Needham Market Community Centre**  
 contact Joan Hardingham 01449 258099 to find out more



### Sudoku -fiendish

Like an easier one? Let us know.  
 Complete the grid using the numbers 1-9  
 using each number only once in each  
 row, column or 3x3 box. Solution p. 31.

7			1					
1	4						8	9
		8	3	4				
4	5			1		8	3	
			8		4			
	2	6		7			4	1
				3	2	4		
6	3						7	2
					1			3

#### RAINFALL IN IP6 8 area 2020.

Month..	Rain in mm.
<b>JANUARY</b>	<b>58.0</b>
Last Year	19.0
12 month cumulative.	642.5
Wettest Jan. since 2014 (88mm)	

#### RAINFALL IN IP6 8 area 2020.

Month..	Rain in mm.
<b>FEBRUARY</b>	<b>77.0</b>
Last Year	26.0
12 month cumulative.	622.0
Wettest Feb. since 2001 (78mm)	
Average since then -	35.5

# Creeping St. Mary Women's Institute

Have you considered joining the WI?

Do you want to socialise and make new friends?



Normally our meetings are held at the Village Hall at 7:30pm on the second Wednesday of the month.

**However all meetings have been cancelled till further notice.**

We are a friendly WI who welcome members from a wide area. Refreshments are enjoyed after our meetings. We also have walking, lunch and patchwork groups which we hope will be resumed as soon as possible.

**Our April meeting was to celebrate our 73rd Birthday with a meal out. However this has been cancelled.**

## Recent Events

In February we had an interesting and informative visit from Laura Squirrel of Ipswich "Lighthouse" formerly known, to me at least, as Women's Refuge, Laura explained about the wonderful supportive work they do in helping abused women. Half of UK women who are killed, die by the hand of a partner or ex husband - a terrible statistic. Women who get the courage to flee domestic violence need a safe refuge both for themselves and often young children - and this is what Lighthouse can provide. There are so many now recognised forms of abuse - coercive control being one - and Lighthouse will help and support those in great unhappiness and danger. We were told that one in five women will experience some sort of abuse over their lifetimes - a very sobering thought.

For our March Meeting we were entertained by Oliver Miller the MD Of Bishop and Miller, auctioneers in Stowmarket. Many of us had brought along treasured items for valuation and some of us received very good news but others had their hopes shattered! Cycles of what is collectable change frequently so choosing a best time to sell something is critical. Oliver also brought along some of his own interesting items to show us and explain their history too. Perhaps a few more delves into storage in our lofts will be called for in the coming weeks....

***Chris Bingley***



*Professional :: Friendly :: Competitive :: Fully Insured  
Tree Work Specialists, Fencing & Garden Services*

Tel: 01449 722795

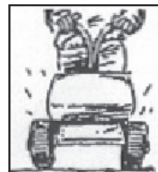
Mobile: 07825 678760

Email: [info@arctreesurgery.co.uk](mailto:info@arctreesurgery.co.uk)

[www.arctreesurgery.co.uk](http://www.arctreesurgery.co.uk)

**You Grow It, I'll Mow It!**

Grass Mowing  
Hedge Trimming  
Strimming  
Turfing  
Fencing



Call Nigel (01449) 721025

## **P B S Plumbing & Bathroom Services**



A Reliable & Friendly Local Service

Bathrooms, Showers, Kitchens & Radiators.  
All Household Plumbing Requirements.  
Maintenance & New Installations.

Mobile - 07870 989 422.  
Evenings - 01449 720095.

\* FREE ESTIMATES \* ALL JOBS CONSIDERED \*  
\*\*AVAILABLE EVENINGS & WEEKENDS \*\*

## **Rosie Hancock**

**Certified in Reflexology,  
Indian head massage,  
Swedish Massage  
Also Private Physiotherapist**

**01449 614308  
or 07947787343**

**Be Amazing** and become a  
Home-Start Volunteer



**Because Childhood Can't Wait.**

We recruit and train volunteers to support families with children aged 11 and under in their own home. We couldn't carry out this vital work without volunteers, so if you are a parent, grandparent or step parent and can spare 2-3 hours a week to do something amazing, please contact us.

For more information call Linda on 01379 678552  
or email [office@homestartmidsuffolk.org.uk](mailto:office@homestartmidsuffolk.org.uk)

Home-Start Mid & West Suffolk Registered charity no. 1127760

## **HIGH FLYERS SELF-STORAGE**

20' X 8' X 8' CONTAINERS  
(1,172 CU.FT)

**AVAILABLE  
FOR RENT**

HIGHFIELDS FARM, BATTISFORD,  
STOWMARKET, SUFFOLK IP14 2HL

TEL: 01449 722122

[WWW.HIGHFLYERSCLOTHING.CO.UK](http://WWW.HIGHFLYERSCLOTHING.CO.UK)



## Stowmarket Group Suffolk Wildlife Trust

### **ALL EVENTS HAVE BEEN CANCELLED OR POSTPONED AND ALL RESERVES CLOSED**

We are a group of volunteers who care deeply about wildlife, for its beauty and diversity and importance to everyone's existence. We support the Trust's aims and vision for a Living Landscape - with nature reserves, Sites of Special Scientific Interest and County Wildlife Sites forming networks of linked-up habitat.

#### **We look after local wildlife reserves:**

Work parties maintain Combs and Bonny Woods

**SWT Magazine** is delivered to local members, saving postage costs.

**We organise local events:** talks at Stowupland village hall and guided walks. The complete programme can be downloaded from [www.suffolkwildlifetrust.org/wildlifegroups](http://www.suffolkwildlifetrust.org/wildlifegroups)

**Contact John Thompson 01449 676471 [swtstowmarket@gmail.com](mailto:swtstowmarket@gmail.com)**

#### **Our most local reserves:**

Combs Wood, Bonny wood, Bradfield Woods, Bull's Wood, and the Blackbourne Valley.

### **RECENT EVENTS**

The first meeting of 2020, in February, was very well attended. Darren Tansley entertained us with his enjoyable and informative talk about the members of the weasel family and their lives in Suffolk and Essex. Everyone is welcome to attend our meetings; just come along.

#### **THE FOLLOWING EVENT HAS BEEN CANCELLED**

HEDGEROWS, HERBS AND MEDICINES,  
an illustrated talk with Martin Sanford.  
Wednesday 29 April 2020 at 7.30pm  
Stowupland village hall.

A look at some common plants of Suffolk hedges and waysides, their use for foods and medicine and how we use them sustainably.



Common Comfrey - Terry  
Whittaker/2020VISION



# **Suffolk Sweep**

## **Chimney Sweeping Services**



**As a member of the Guild of Master Chimney Sweepers I am committed to providing a professional service, ensuring your chimney is kept clean and your home safe.**

**My services include:**

**The sweeping of open fires, all solid fuel appliances, gas and oil boiler flues.**

**Safety inspections and smoke testing.**

**Carbon monoxide and smoke alarms supplied and fitted.**

**Insurance company recognised certificates issued.**

**Fully insured**

**The safety of your home is paramount and all services are carried out in strict accordance with current regulations and approved sweeping methods.**

**Telephone John on 01449 737513  
or text SWEEP to 07858768162**

## Needham Market and District Horticultural Society

### 2020 EVENTS HAVE BEEN CANCELLED OR POSTPONE UNTIL FURTHER NOTICE

New and returning members are very welcome.  
(first Thursday of the month, Needham Market Community  
Centre at 7:30 p.m.)

Membership costs just £5 for 2020 and is payable at the ever  
This includes 9 speakers.

Subjects include Henstead Exotic Garden and "Do plants wear  
coats?"

Our outings take place from late April when we will see  
thousands of tulips at Ulting Wick; a mid-summer visit to  
Beeleigh Abbey through to September and a visit to Cambridge.

Our annual supper is held in mid-October at a local restaurant.

***Hazel Mackintosh, Joint Events Co-ordinator 01449 720753***

**Cas**

Door

Sl

Cup

**Call T**

tom@

#### SODUKU SOLUTION

7	6	2	1	8	9	3	5	4
1	4	3	6	2	5	7	8	9
5	9	8	3	4	7	2	1	6
4	5	9	2	1	6	8	3	7
3	7	1	8	9	4	6	2	5
8	2	6	5	7	3	9	4	1
9	1	5	7	3	2	4	6	8
6	3	4	9	5	8	1	7	2
2	8	7	4	6	1	5	9	3

**This 1/4 page  
advert could be  
working for your  
business or charity**

***I live in a privately rented two-bedroom house and the damp in the living room is aggravating my three-year-old daughter's asthma. I've told my landlord but she's not taking action. What can I do?***

Resolving damp issues can be difficult - especially as the cause of the problem is not always obvious. Also, by raising any disrepair complaint to a private landlord it's important to realise that there is a risk of retaliatory eviction.

First, make sure you're not doing anything that could be contributing to the damp, such as drying clothes indoors or blocking vents. Once that's done, you have two potential routes available.

The first is to report the problem to the Environmental Health department at your local authority. This route is best if you're unsure what's causing the damp, but it's also an option if you think your landlord is responsible.

Tell your council the damp is causing your daughter's asthma to worsen and provide evidence, including letters from your GP, photos of the damp, and a copy of your tenancy agreement.

The local authority can issue an awareness notice, which tells your landlord there's a hazard in the home and what she needs to do to fix it, although it does not require her to take action. The authority can also serve the more serious improvement notice, which requires your landlord to carry out the work and also offers you some protection from retaliatory eviction.

Alternatively, you could take her to court. Your landlord may be held responsible for repairing the damp but this will depend on the cause - such as a broken heater or window - and the terms of your tenancy agreement.

If she is responsible, the court can grant an injunction and possibly award compensation.

**Seek advice from Citizens Advice before going down this route because the legal process can be complex. You may also be entitled to legal aid. Citizens Advice Mid Suffolk can provide advice on this or any other issue, including debt, housing, benefits and family law. You can contact them on 01449 676060 or go to the Advice Centre on 5 Milton Road South, Stowmarket. For more information and our opening hours go to [midsuffolkcab.org.uk](https://midsuffolkcab.org.uk).**

# Stowe Vets

## The Animal Welfare Act 2006

Most owners do a brilliant job of making sure their pets stay happy and healthy. But did you know that the need to ensure an animal's welfare is written into UK law? The Animal Welfare Act 2006 outlines five basic needs that every pet owner must provide for their pet. These are:

### 1. The need to live in a suitable environment

Guinea pigs, for example, need a large hutch and have constant access to a large grassy area. You should also provide plenty of toys and activities to keep them entertained.

### 2. The need to have a suitable diet

An example of this is a rabbit's diet, which should consist of plenty of hay, good quality pellets, fresh leafy vegetables and water. Anything more than this is a treat and should only be given to your rabbits in small amounts.

### 3. The need to be able to exhibit normal behaviour patterns

Dogs are sociable animals and therefore enjoy playing with other dogs, people and toys. It is vital to ensure that your dog has regular opportunities for play and interaction to avoid boredom.

### 4. The need be housed with, or apart from, other animals

Not all breeds of hamsters are sociable. Syrian hamsters are naturally solitary creatures, while species like the Russian dwarf prefer to live in groups. Cats are also a solitary species and most prefer to live alone.

### 5. The need to be protected from pain, suffering, injury or disease

Regularly check your pets for signs of injury and illness and contact your vet if you notice any changes in their behaviour. It is also important to check your pet's coat for fleas and infestations and pay close attention to their dental care.

A recent study by animal charity PDSA found that a staggering 66 per cent of owners were unaware about the five welfare needs before participating in their research. Pet owners can be prosecuted for failing to meet these needs, with the most serious crimes leading to a substantial fine or imprisonment.

For more information about meeting your pet's welfare needs, or for more information on any aspect surrounding the euthanasia procedure, please contact:

**Stowe Veterinary Group on 01449 613130.**

## Stowmarket Chorale

On behalf of Stowmarket Town Council, the Mayor, Cllr Paul Ekpenyong presented a cheque for £400 to Stowmarket Chorale, to assist with the venue and publicity costs for the Fauré's Requiem concert due to have been performed in March. Global events took over, the concert was cancelled, and the hope is we will sing the Requiem at a future date.



***For further information contact  
secretary@stowmarketchorale.org.uk***



**The Limes Hotel,  
Needham Market  
is under new  
management!**

**Open Daily from  
11am for:**

Teas & Coffees, Lunches & Light Bites,  
Evening Meals & Drinks in Bugs Bar.

We also have a fantastic party venue,  
meeting room, 11 bedrooms & ample  
parking.

Call 01449 798401 or just pop in!

**THIS ADVERT  
COULD BE  
WORKING FOR  
YOUR BUSINESS  
see details on the  
last page**



**Creeting St Mary**  
Photograph taken from the air ambulance by  
Dr. Nicola Ebbs, Summer 2019

## For Sale

**Copies of this wonderful photo taken by Dr Nicola Ebbs from the East Anglian Air Ambulance are available for sale with the proceeds going to the East Anglian Air Ambulance.**

Prices:

A4 format £25 framed (plain black ) - £20 unframed

A5 format: £15 framed - £10 unframed.

£5 from each sale will be donated to the air ambulance.

To order copies please contact:

Steve Fernie at Creeting House (opposite the church)

steve@creetinghouse.com or phone 01449 720988

## GENERAL INFORMATION AND CONTACTS

### Creeting St Mary Newsletter:

#### Editors

**Content:** Joan Hardingham, Alder Carr Farm,  
creetingnewsletter@gmail.com

**Liaison** with contributors and advertisers:

Kathryn Martin,  
creetingnewsletter@gmail.com

**Advertising:** Jennie Blackburn (01449) 721369  
clerk.csmmpc@yahoo.co.uk

(Advertising rates are on page 35)

**Distribution:** Kathryn Martin (01449) 720491

**Newsletter deadlines:** the 20th of the months of:

September (Oct-Nov edition i.e early December and Christmas events)

November (Dec-Jan edition)

January (Feb-Mar edition)

March (Apr-May i.e. Easter)

May (Jun-Jul i.e. all those mid- summer events)

July (Aug-Sep - the summer holiday events)

### Creeting St Mary Parish Councillors

Name	Portfolio
Sue Haynes	Chair - 01449 722570
Roger Coton	SALC - 01449 721526
Nigel Smart	Village Hall Management Committee - 01449 720100
Paul Scully	Footpaths and Bridleways - 01449 721461
Jan Palmer	Blacksmiths Field - 01449 723997
Hugo Craggs (Vice-Chair)	CiL and Sustainability- 07815137228
Lesley Plummer	new councillor 01449 720359
Chris Emmins	new councillor 07894231165

To contact any of the parish councillors, please contact the Parish Clerk first  
Parish Council Clerk : Jennie Blackburn - 01449 721369  
or email: clerk.csmmpc@yahoo.co.uk

Meeting agendas and dates are placed on the village noticeboards during  
the week prior to the meetings, and also on the website.



## **Creeting St Mary Website**

Alastair Rogers: (01449) 720580 a.s.rogers@qwic.co.uk;  
www.creeting-st-mary.suffolk.gov.uk

## **Diamond Jubilee Village Hall Hire:**

Richard Hyde Tel: (01449) 720024; creetingjubileehall@gmail.com

**Creeting St Mary Social Club:** csm\_socialclub@outlook.com.

## **Creeting St Mary Neighbourhood Watch** Representatives:

Bill Mackintosh: (01449) 720753

Sue Haynes: (01449) 722570

**Creeting St Mary Footpaths** Paul Scully 01449 721461

e-mail: paul@impressions41.plus.com

**Creeting St Mary Welfare Charities** Mr. D. Primmer, 30 All Saints Road,  
Creeting Saint Mary, IP6 8NF 01449 721514

**County Councillor for the Thredling Division:** Matthew Hicks

Tel: (01728) 628176 ; matthew.hicks@suffolk.gov.uk ; Twitter: @HicksCllr

## **Mid Suffolk and Baburgh District Councillors:**

Mike Norris - mike\_norris@hotmail.co.uk 01449 720871

Steve Phillips - steve.179@icloud.com 01449 721710, mob. 07794823323

## **Member of Parliament for Central Suffolk and North Ipswich**

Dan Poulter Tel: (01728) 726588 ; daniel.poulter.mp@parliament.uk

Twitter: @drdanpoulter

## **PARISHES:**

Rev'd Philip Payne, Priest-in-Charge North Bosmere Benefice

The Rectory, The Street, Stonham Aspal, IP14 6AQ

01449 711684 revphilppayne@btinternet.com

## **CSM Newsletter – Advertising Costs**

Bi-monthly issues (June/July; Aug/Sept;

Oct/Nov; Dec/Jan; Feb/Mar; Apr/May)

Deadline 20th of month previous.

One insertion (depending on space)

Full page - £20

1/2 page - £15

1/4 page - £10

1/8 page - £5

Series of 6 adverts:

Full page - £108.00 (inside) / £125.00p.a.  
(outside)

1/2 page - £75.00

1/4 page - £48.00

1/8 page - £24.00

An editorial piece about your business  
(approx 100 words) can be put in annually.

# The Mustard Pot Veterinary Surgery

For a professional caring service



**Tel: 01449 722 198**

**Coddenham Road, Needham Market, IP6 8NU**

A member of Stowe Veterinary Group  
**[www.stovevets.co.uk](http://www.stovevets.co.uk)**

