

Volume 38/3 June and July 2020

Heralds of Summer - we welcome these migrants to our shores



Swallows - after flying thousands of miles, who cannot be warmed by their infectious twittering when they have found a nest site



Bumblebee buzz is the sound of summer. A newly arrived species, Tree Bumblebees make themselves at home in a bird box, annoying the Bluetits.



Himalayan Balsam - pretty flower or seed-shooting plant thug of the riverbank. Garden introduction in 1839.



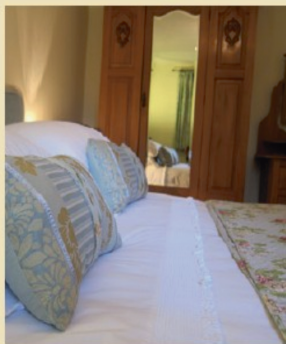
Several farmers in CSM put out seed provided by the RSPB to welcome back those Turtle Doves who have escaped being shot in the Mediterranean.

The Creeping St. Mary Newsletter



Upper Langdales Farmhouse Cottages

Creting St Mary, Suffolk



Retreat to our fabulous collection of lovely holiday cottages
offering peace and tranquility in a beautiful location

Relax and enjoy the serenity of Suffolk

01449 721246 | 07789 458923 | www.upperlangdalesfarmhouse.co.uk

Editorial Comment

We did not have to reduce the pages of the newsletter as feared showing that people have been getting on with the job, if not 'as usual' certainly effectively. Not being allowed to meet up has not stopped things happening and many of us have had to become very 'tech-savvy' to keep in contact with job, family and friends - as Jenny's Parish Council report testifies: there are planned improvements for the village; new play equipment and an adult fitness 'trim track' and managing of the newly-acquired Wildwood will need volunteers.

The County Council's attention has been almost entirely on how to manage areas in their remit to cope with 'the new normal': fire-fighters are being trained to work alongside paramedics and drive ambulances; supporting their tenants through rent reductions; increasing support for care providers and retraining and redeploying staff from other departments. Anyone in need of assistance should be aware of SCC's 'Home, But Not Alone hub' 0800 876 6926 (9am-5pm 7 days a week. The Council has swung into action co-ordinating supplies of PPE (personal protective equipment) for all areas under their jurisdiction from care homes, to the police, fire and adult and children's services. this is all being achieved when business rates and other such income has plummeted.

Concern about keeping fit while sports and other activities are suspended is addressed on their Keep Moving Suffolk website. Lack of fitness is an enormous issue and there is fear that there may be more casualties from its impact on our health than the disease itself - particularly as there are links emerging between obesity and susceptibility. Also the mental health issues arising from the stress of confinement- either being alone or with people you would rather get away from. The Council also brings attention to scams associated with the current crisis which the unscrupulous are exploiting.

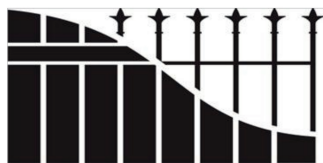
Similarly the District Council is focussed on helping cushion the financial impacts of the pandemic with grants available to businesses and community groups - some of which have not been claimed. Astonishingly, planning applications are down to one.

Importantly Gipping Press, our publishers, are working, though, like many businesses, must be wondering whether work will continue if we don't resume our usual activities. It is clear that we should be supporting local businesses - especially food businesses that have gone the extra mile to ensure they follow government guidelines or change the way they operate and help people that cannot leave home. And of course not forget all the other essential services that keep us comfortable.

Though village activities have ceased the community continues and came out, 'socially-distanced' of course, to celebrate VE day and clap for carers. 52 people have currently volunteered to help neighbours in the village through the Parish Council.

There - I have managed a whole editorial without mentioning the new 'C' word. So please keep safe and in spite of all the uncertainty about how to do it, the most important things we can do to beat the beast are hand-washing, 2m. distancing and keeping fit. Finally, as usual, thanks to co-Editor Kathryn Martin and everyone whose contribution produces this newsletter

Joan Hardingham Editor



**CLARKE
FENCING LTD**
TEL 01449 614939

For the best Fencing Products in East Anglia, why not come and visit our new premises:

Unit 3, Stowmarket Business Park, Ernest Nunn Road, Stowmarket, IP14 2ED

Not only have we expanded our premises but we have also expanded our product range:

Closeboard, Larch Lap, European Decorative Panels, Trellis, Post and Rails, Gates.

Sheds, Dog Kennels, Summer Houses and Children's Play Houses.

Electric Fencing for Horses and Cattle as well as Stock Fencing.

Decking, Planters, Picnic Tables, Sleepers.

Ironmongery, Wire Netting, Chainlink, Ronseal Preservatives, Tools.

Cement and Ballast, Ply Wood, Protective Clothing.

** Free No Obligation Quotations * ~ ~ * We Supply & Fit to Trade and Public **

Email: info@clarkefencing.co.uk

www.clarkefencingltd.co.uk

**E&D Boiler
Maintenance Ltd**



LOCAL, PROFESSIONAL, ESTABLISHED SPECIALISTS IN

Oil, Gas & LPG

Servicing, Breakdowns, Repairs and Installations

All makes covered including:

Grant, Worcester Bosch, Boulter Camray, HRM Wallstar, Vaillant, Baxi.



Upper Church Farm, Finningham Road, Rickinghall, Suffolk, IP22 1LP

**Telephone
01379 898574**



www.boilerrepairsuffolk.co.uk

CREETING ST MARY PARISH COUNCIL NEWS

Coronavirus (Covid-19)

The Parish Council hope you are all keeping safe with the current situation. Please remember to contact us if you need help with shopping or delivery/pick up of prescriptions, or even just for a chat! There are currently 52 helpers on the list, so please, contact a member of the Parish Council if you need assistance with anything. In relation to Parish Council meetings please keep an eye on our website/Facebook page for possible changes to dates and times. Temporarily our meetings will need to take place 'virtually' rather than in person. Please keep a look out for further information.

It is so lovely to see so many people, walking and cycling around the village and surrounding area, taking in the countryside that we are so lucky to have right on our doorstep!

Wildwood

The Parish Council are being gifted a small piece of land, called 'Wildwood', by some local residents in Needham Market. This is situated amongst land between Flordon Road and Needham Lake. The Wood is to remain a Wildwood and will be maintained by the Parish Council for the enjoyment of all. The Parish Council plan to put together a volunteer group to help maintain the brambles, trees and bushes in the near future, so if anyone is interested in helping, please contact the Parish Clerk.

Play Equipment

The Play Equipment Committee and the Parish Council are planning to purchase its next stage of play equipment on Blacksmiths Field, in addition to replacing the swings. Additional equipment will include a trim track for the use of adults. Plans to install the equipment and replace the swings will happen as soon as possible.

County Councillor's Report

Firefighters support paramedics to help deliver life-saving care - Firefighters in Suffolk are joining forces with the East of England Ambulance Service NHS Trust (EEAST) to help provide frontline care during the coronavirus pandemic. Suffolk Fire and Rescue Service has volunteered and trained around 30 firefighters to work alongside paramedics to respond to 999 calls over the coming weeks. The firefighters are already blue light trained and will drive frontline emergency NHS ambulances, in turn freeing up paramedics to care for patients. The firefighters have completed an induction course at Newmarket Ambulance Station, which included familiarising them with EEAST's vehicles and equipment. They were also taught basic life support and safe moving and handling skills so that they can help transfer patients.

The fight against scams - Times of distress and disruption are a magnet for scammers and, sadly, now is no different. Action Fraud has reported that, in February alone, victims lost over £800,000 as a result of COVID-19 related scams. This figure is likely to be just the tip of the iceberg, as many will have felt too scared or ashamed to report, and others will be completely unaware that they have been duped. Here in Suffolk both residents and businesses have been targeted by fraudsters in a variety of ways. Trading Standards have seen emails that contain malware links and attachments, as well as those sending you to phishing sites, where the criminals attempt to steal your personal information. There have been reports of criminals knocking on doors and offering to go shopping for people who are self-isolating at home. Some purport to be from well-known charities such as The Red Cross, with others claiming to be from local community groups, including working on behalf of Suffolk County Council's Home, But Not Alone. There are also reports of



Andrew Bingham

INDEPENDENT FUNERAL SERVICE

Local Caring Independent Funeral Service

24 Hour Personal Service

Qualified

Experienced

www.andrewbingham.co.uk

01449 771666

The Nutshell, Milton Road South, Stowmarket, IP14 1EZ



Golden Charter
Funeral Plans



Helping Hands
Handyman Service

All aspects of Home & Garden Maintenance carried out

Painting & Decorating

Tiling

General DIY

Decking, Patios & Fencing

Any type of work considered
No Job too small - need a helping hand?

Call Kevin

01473 839006 - 07513107911



CHIMNEY SWEEP

ECO SWEEP
CHIMNEY SERVICES

- NEW POWER SWEEPING METHOD USED FOR A MORE THOROUGH CHIMNEY CLEAN THAN BRUSHES.
- INDUSTRIAL HEPA FILTERED VACUUM.
- FULLY INSURED.
- INSURANCE RECOGNIZED CERTIFICATES ISSUED.
- SPOTLESS, RELIABLE AND FRIENDLY SERVICE.
- ALL CHIMNEYS, WOOD BURNERS, AGA, BOILER FLUES SWEEP.
- GUILD OF MASTER SWEEPS CERTIFICATED MEMBER.



Power sweeping



TEL. 01359 232335

fake websites that imitate agencies including HMRC, offering false tax relief assistance. Trading Standards have highlighted all these scams on their social media channels as well as in their weekly email to over 700 Trading Standards Champions. Their followers on social media have helped share the information to thousands of people, who in turn have shared it with friends and family both on and offline. Consumer Champions are residents, businesses and community groups of Suffolk, many of whom share the information on their community websites or in newsletters. You can join the fight against scams by:

Reporting scams to Suffolk Trading Standards via the Citizens Advice Consumer Service on 0808 223 1133 Following on Twitter, www.twitter.com/SuffolkTS, and Facebook, www.facebook.com/SuffolkTradingStandards, to help share messages to your friends, family and followers. Sign up to receive a weekly email alert by going to www.suffolk.gov.uk/JoinTheFight

Suffolk County Council to offer tenants rent deferral as part of support efforts during COVID-19 pandemic - Suffolk County Council owns and lets a range of properties and land to tenants throughout the county which are used in a number of ways, including the provision of care and education. During this challenging period, as residents of Suffolk stay at home to reduce the spread of infection and the majority of businesses remain closed, as a considerate landlord the council believes it should do what it can to support the local and regional economy through the management of its rental agreements with tenants. The authority has identified 87 of its most vulnerable tenants, which encompasses 123 properties. We have been in touch with each tenant to ask if there is anything we can do to support them at this difficult time. We believe these tenants should be given the opportunity to arrange deferral of their rent and charges for three months, should they wish to do so. This would give them a degree of financial support for a short period of time as the impacts of coronavirus on business continue.

Council continues to work with providers during Coronavirus pandemic - As the Coronavirus pandemic continues, the county council is keen to reassure people that it is doing everything in its power to support care providers. Along with the NHS and health providers, the care system is vital to our response to Coronavirus and they are truly on the front line in terms of supporting our most vulnerable. The demand for their services has never been higher and SCC is supporting them meet this challenge. The council has changed the way in which it pays care providers in order to ensure they are able to remain operational during the crisis. The council has also moved quickly to obtain extra capacity for care needs to be met by using CQC registered providers of home care that do not normally contract with the Council and buying more beds in care homes. The council's own Home First service is also preparing for increased demand and planning for sickness levels by initially redeploying staff from across Adult Community Services. Basic training is already underway to upskill or refresh the skills of these staff in order to be ready for redeployment. Adult Care Services are also working closely with the Home, But Not Alone hub to identify what other support can be offered to ease the pressure on carers as the crisis continues.

Council recognises the supply of personal protective equipment (PPE) is ongoing, national issue for care providers. Whilst care providers are responsible for sourcing PPE for their service, the high demand globally has made this increasingly difficult, adding to the pressure and anxiety of frontline workers. The council has lobbied tirelessly to ensure that care providers are given the same prioritisation as health

GUDGEONS PRENTICE

SOLICITORS

TELEPHONE: (01449) 613101 | EMAIL: info@gudgeons-prentice.co.uk

BUTTERMARKET | STOWMARKET | SUFFOLK | IP14 1ED

www.gudgeons-prentice.co.uk

GUDGEONS PRENTICE are local solicitors and specialist in:-

Wills and Probate

Powers of Attorney

Residential Conveyancing and Commercial Property

Landlord and Tenant

Divorce, Financial Matters, Separation, Child Welfare and Other Family and

Matrimonial Matters

MRS HAZEL RICE

We have sadly learned of the death recently, at the age of 90, of Mrs Hazel Rice, long-time teacher of the first year classes at the school. We have been unable to get further information - but have found some old school photos. Please contact the newsletter with dates and memories of a teacher who was such a significant figure in the lives of our children from the early 1970's till late 1980's.



CSM Staff 1978. Hazel Rice - 2nd from R, Rosemary Suggate 3rd from R.

workers in terms of receiving PPE and will continue to do so.

In order to support our local care providers SCC are providing a centralised cell for PPE in Suffolk with a dedicated email address. The council has been collating information for Adults and Children's services, districts and borough councils, Suffolk Constabulary, and the Suffolk Fire and Rescue Service and this is then fed into the stock and procurement system. The council's procurement team has established some good supply chains, both nationally and internationally. Endeavour House, Ipswich, is the central base for all PPE delivery, storage, pack prep, and distribution. Packs are being sent out to frontline services in Suffolk on a daily basis. In the week of 6 April alone, 65 care homes were provided with the emergency PPE they asked for and the council has responded to every care provider that has approached the council for support.

Residents show their support for Keep Moving Suffolk campaign - Residents and organisations in the public and voluntary sector have come out in support of the county's Keep Moving Suffolk campaign. Led by Suffolk's Most Active County Partnership, the campaign supports everyone in Suffolk to get active from the safety of their homes and gardens, or during their one session of daily exercise away from their home, under the current COVID-19 pandemic social distancing arrangements. It's all about giving people tips and advice to support a healthy mind and body. The key focus is the website keepmovingsuffolk.com which is full of local and national information and resources that have been developed specifically to make it easy for people to become, or remain, active at home during these challenging times. The website has come about as a means to address the need to give people a range of options following the closure of gyms, leisure centres, and swimming pools and the cancellation of classes and activities. Without us all taking positive action, physical activity levels could tumble and cause a long-term impact on physical and mental health and wellbeing in the county. The website launched on 1 April and, within its first week, the website was used over 2,500 times. There has also been great support through the Keep Moving Suffolk social media channels, where you can share with us your stories of how you are keeping active. On Facebook, visit [KeepMovingSuffolk](https://www.facebook.com/KeepMovingSuffolk) or on Twitter @Most_Active

Matthew Hicks - County Councillor for the Thredling Division

Tel : 01728 628176 Mob : 07824 474741 E-mail :

matthew.hicks@suffolk.gov.uk

District Councillor's Report

We know you've 'bin' waiting - Babergh and Mid Suffolk District Councils are poised to re-launch their garden waste collections during May, having stopped them to protect essential collections during COVID-19.

Approval for 98 homes enables sports facility for Haughley - Detailed plans for 98 new homes in Haughley have received the go ahead – providing a range of community benefits for the village, including a new football pitch.

£17m COVID-19 grant funding unclaimed by small businesses in Babergh and Mid Suffolk - Over £28m has been awarded to eligible small businesses, shop owners and leisure organisations in Babergh and Mid Suffolk since the launch of the Government's Small Business Grant and Retail, Hospitality and Leisure Grants at the end of March.

Green light for £2.2m extension at Mid Suffolk Leisure Centre - Plans for a £2.2m development and refurbishment at Mid Suffolk Leisure Centre in Stowmarket have been given the go ahead.



FARM SHOP DELI BUTCHERY PLANT CENTRE

delicious local and artisan food and groceries
a wide range of cheese and savouries
fresh bread from Wooster's and Palmer's Bakery
our own farm fresh eggs
dairy products
ready meals by Cook
frozen fruit and vegetables
vegetarian, gluten-free and vegan ranges
Eco household and toiletries

In spite of Covid-19 we are open!

We would like to thank all our customers for their support and understanding. We are following Government guidelines and limiting numbers in the farm shop. Please observe the 2m. "social distancing", reduce the number of people in your group in the shop to one or two and don't enter if unwell. We have done everything we can to safeguard customers and staff through these measures, thorough cleaning and ample screening.

Covid - 19 Customer Support collection service from the car park.

For vulnerable and self-isolating customers we are offering non-contact collection. Email or ring with your order and we will contact you for payment over the phone and arrange collection. On arrival, phone to let us know you are here and we will bring it out to you.

limited home deliveries

For vulnerable & self-isolating residents of Creting St Mary & Needham Market.

The play area, nature trail and farm animals can be enjoyed

Cafe and Workshop Units will re-open when Government guidelines permit. We are taking the opportunity of the closure of the cafe and units to re-surface the courtyard and ensure social distancing measures are in place when we re-open.

farmshop@aldercarrfarm.co.uk. t: 01449 720820

www.aldercarrfarm.co.uk and Facebook

Online democracy in action - Mid Suffolk District Council held its first planning meeting on Tuesday 28th April using virtual technology – allowing public meetings to continue safely despite the lockdown.

Local community groups to receive over £64,000 in emergency funding - Babergh and Mid Suffolk District Councils have approved grants of over £64,000 to support local communities in their response to COVID-19.

Green light for 115 new homes enables health centre expansion - Detailed plans for 115 new homes at Woolpit received the go ahead on 5th May – bringing a raft of community benefits a step closer, including the expansion of Woolpit Health Centre.

Businesses urged to access financial support and guidance during COVID-19 crisis - Businesses in Babergh and Mid Suffolk are being urged to find out what financial support is available to them as well as seeking advice and guidance in the wake of the COVID-19 crisis.

Emergency funding pot available to help local community groups - Community groups and organisations can now apply for immediate grants of up to £2,500 as part of Babergh and Mid Suffolk District Councils' response to COVID-19.

Mid Suffolk District Councillors Mike Norris mike.norris@midsuffolk.gov.uk Tel. 01449 720871 **and Steve Phillips** stephen.phillips@midsuffolk.gov.uk Tel. 01449 721710. Representing Needham Market, Badley, Baylham, Creting St Mary, Creting St Peter, Darmsden.

Recent Planning Application Decisions

Ref: DC/19/00301 - Full Planning Application - Erection of a 'Mixed use Development' comprising; the erection of 3 detached residential dwellings and garages, the erection of 6 small industrial units (B1), and 1 main industrial unit (B2), all with associated parking, landscaping and boundary treatments - Land North East of Flordon Road, Creting St Mary - GRANTED

Jennie Blackburn (Parish Clerk) – 01449 721369 / clerk@csmmpc.co.uk
Details of Parish Council Meetings and minutes are on the village web-site. For concerns or queries to the Parish Council, contact Jennie Blackburn, Parish Clerk: clerk.csmmpc@yahoo.co.uk or 01449 721369 (answer phone) or come along in person to the next meeting.

Parish Council support to the Community in Covid Times

Support at a community level continues to be to be vitally important and the Parish Council want connect those who need help to those who can give it. If you can help a neighbour with: shopping, postage, urgent supplies or just a chat contact one of the below so we can collate the details.

Hugo Craggs: 07815 137228 hugocraggs@gmail.com
Lesley Plummer: 07889 272856 andaxi@btinternet.com
Sue Haynes: 01449 722570 susannahaynes@talk21.com
Jan Palmer: 01449 723997 cretingtog@gmail.com
Chris Emmins: 07894 231165 chrisemmins@offshoreenergy.com
Roger Coton: 01449 721526 rogercoton@btinternet.com
Paul Scully: 01449 721461 paul@impressions41.plus.com
Jennie Blackburn: 01449 721369 clerk.csmmpc@yahoo.co.uk

Details on Creting St Mary Parish Council Facebook page
<https://www.facebook.com/Creting-St-Mary>

ED: if you are unsure of an approach you have had offering help please consult the people on the list above.

**Delicious
homemade
cheeses, Guernsey
milk and home-
reared beef.**



Sales off-farm Fri 4-6pm, Sat 3-5pm or
collection by prior arrangement.

Whitegate Farm, Norwich Road, CSM

For those self-isolating, we will be able to deliver to the door, please call
Katharine 07931 512790 to arrange this.

SUFFOLK CHEESES

Will be at the Village Hall every Tuesday at
10am with a selection of produce including
milk, butter, cream, cheeses, eggs, bread,
fresh vegetables and meat, which we will
be selling from our livestock trailer.



Thank You from the Village

Thank you to Katharine and Jason
for bringing their mobile shop
into the village on a Tuesday
morning selling a selection of
cheeses, milk and other items.
Many people have benefitted
from this service during these
very difficult times and it is very
appreciated.

CREETING SAINT MARY WELFARE CHARITIES

The Creeting Saint Mary Welfare Charities Trust can provide
assistance for those in need, hardship or distress by reason of, age,
illness, unemployment, the need to continue in further or higher
education.

SOME EXAMPLES OF POSSIBLE GRANTS

Annual grants to those receiving state pension in financial need.

Grants toward the relief of general hardship.

Grants for students who are in higher or further education.

Help with aids to cope with disability not available from state funding.

Grants towards maternity costs.

Grants towards funeral expenses.

Help towards cost of personal Pendant Alarms for the elderly.

The Trust is intended to benefit the residents of Creeting Saint Mary,
however, in exceptional circumstances the Trustees may consider
applications from persons who are resident outside the Parish.

TRUSTEES: Mr. P. Stephenson (Chair) Mr. D. Primmer (Hon. Clerk)

Mrs. M. Aldred, Mrs. P. Day, Mrs. K. Martin,

Please make any enquires to :

Mr. D. Primmer, 30 All Saints Road, IP6 8NF Telephone 01449 721514



From the Rectory

Rev. Phillip Payne

THEY ALSO SERVE WHO ONLY STAND AND WAIT

And so we wait, despite the recent fanfare of change, the quarantine goes on. Our days are quiet and yet the news recounts the busyness, burdens and sacrifices of others. Meanwhile we only stand (or maybe sit) and wait. Anxious to 'get stuck in', fearing an unknown future, simply feeling useless; in times of crisis it's the waiting that tells. Above all, perhaps, waiting reminds us that we are not in control of the things that matter most; and then we fret.

Fretting solves nothing. Jesus once asked "can any of you by worrying add a single hour to your span of life?" (Mat 6:28). Indeed, the opposite is true. But Jesus went on to say that God knows what we need, and if we seek his kingdom then our needs will be met. Though it also needs saying that God's ideas of what we need are frequently not the same as ours – and, yes, faith and patience appear to go hand in hand.

As a crisis unfolds, waiting sounds so negative; as if time waiting is time wasting. Yet Isaiah, speaking to a people facing the disaster of exile, was able to say 'they that wait upon the LORD shall renew their strength; they shall mount up with wings as eagles; they shall run, and not be weary; and they shall walk, and not faint.' (Is 40:31). Words of hope indeed. God's people had to wait, and as they waited, had to get on with life, as and where it was. As they lived, they were called to listen to God and learn. What the exiles learned as they waited on the Lord, blessed generations to come.

It's a repeat story. From Abraham longing for a son, to the disciples waiting the coming of the Holy Spirit. Time and again we see the most valuable lessons learned the hard way, in times of waiting. We see too that the blessings are an inheritance to hand on. So what of us, can we lay aside our impatience?

"God doth not need either man's work or his own gifts; who best bear his mild yoke, they serve him best. His state is kingly. Thousands at his bidding speed and post o'er land and ocean without rest: they also serve who only stand and wait." (John Milton, Sonnet 19)

Rev'd Philip Payne, Priest-in-Charge North Bosmere
Benefice
The Rectory, The Street, Stonham Aspal, IP14 6AQ
01449 711684 revphilppayne@btinternet.com



CHURCH SERVICES

St. Mary's Church,
Creeting St Mary

St. Peter's Church
Creeting St. Peter



St Mary's Church, Creeting St Mary

As you are aware, all the churches are closed until further notice. Benefice services are taking place via ZOOM. Further afield, the Diocese stream daily services on the internet and the BBC have programmes on both radio and tv - see below for further details.

We send out weekly bulletins in the form of emailed notices or by post. If you would like to be included on the email list, please contact lizandjohnnince@gmail.com A phone call to the Rectory 01449 711684 will ensure you are put on the postal list.

NORTH BOSMERE BENEFICE WORSHIP via ZOOM –

10am Sundays and Tuesdays, 7pm Fridays

If you haven't joined us before and would like to, please send an email to reader.ruthdennigan@gmail.com. Before the worship starts you will receive an email from Ruth with a link to click on.

SERVICES ON RADIO AND TV

The Diocese is streaming church services via Facebook daily:

Sunday -10am Eucharist, 3.30pm Evening Prayer

Monday to Friday, 8.30am Morning Prayer, 12 noon Eucharist, 5pm Evening Prayer

Saturday - 8.30am Morning Prayer, 3.30pm

Sunday service at 8am - BBC Radio Suffolk and at 8:10am - BBC Radio 4

Daily service is 9:45 am on BBC Radio 4 (Long Wave or BBC Sounds).

Sunday Worship at 10.45am on BBC 1 and Songs of Praise at 1:15pm on BBC1.

Rev'd Philip Payne 01449 711684 revphilippayne@btinternet.com

Church Warden. Please note Creeting St. Mary church currently has no Church Warden.

REPORTS TO THE ANNUAL PARISH MEETING (APM)

Once a year organisations in the village are invited to present a report of their activities to the Parish Council. this year it was conducted via Zoom. There were 12 reports and will be featured in the newsletter over the next year

Parish Council Chairman's Report to the APM.

Good Evening All and Welcome.

This 'Parish Council Year' hasn't quite had the planning application domination as last year but, for the last three months, we have been in Lockdown, due to the corona virus. This has meant our last meetings have been held via Zoom and we haven't carried out some of the projects we intended. Hopefully, they will be furthered at a later date.

Prior to this, thanks to the generosity of Mark Euston, a defibrillator has been installed in the red kiosk at Jack's Green. Paul Scully has had a footpath map made and installed in the kiosk with information on local walks. Thankyou Paul.

Unbelievably, one day, the old, redundant, kiosk at the Hall disappeared, just as a use had been thought of for it.

A new noticeboard, made by The Men's Shed has been installed at Jack's Green, the old one removed and recycled elsewhere. Thanks once again, to Paul Scully for this, helped by the late David Squirrel, who will be sadly missed.

Jack's Green also has the solar powered vas speed activated machine. The other one in All Saints Rd was removed by a builder and has yet to be re-installed by him. In future we will be looking at a Community Speed Watch scheme

The Community were, very generously, donated a quantity of tools from Bosch.

These are for use around the Village. In order to keep them in a secure place, we have purchased a container. This is sited in the car park behind the Village Hall.

After Lockdown it's other uses will be discussed and organised. SCC have handed over the care of grass areas and verges to the PC. It has been decided areas that are not causing a footway problem will only be cut in Autumn, to help the wildlife. A new website has been set up for the Village. I would like to thank Alistair Rogers for all his work on the old one over the years.

The Parish Council is in the process of taking over an area of land, running from Flordon Rd to Needham Lake, called The Wildwood. At the moment we are sorting out the legalities. Hopefully, a volunteer group can be set up to care for it. After Lockdown!

In the Autumn we were donated 150 trees by Suffolk Wildlife. My thanks to Hugo Craggs and William Barnes for organising the distribution of these and for doing a lot of the planting around the Village.

We still have Cil monies. Some has been used to purchase the container; more to help the Hall with its new heating installation. Blacksmith's Field equipment is another one ear-marked.

My thanks to all the Councillors who have worked hard throughout the year, and also to Joan Hardingham and Kathryn Martin for the successful publication of the Parish magazine particularly in these strange times.

Sue Haynes. Chair, Creting St Mary Parish Council



CREETING ST MARY SOCIAL CLUB (CSMSC)

csm_socialclub@outlook.com

CREETING ST MARY ANNUAL PARISH MEETING 2020 REPORT FROM THE SOCIAL CLUB

CSM Social Club had a successful and enjoyable year until we were brought to an abrupt halt, forcing the cancellation of two events at short notice. However we are still planning to resume as soon as we are permitted.

We started the year with 42 members and ended with 76. In May 2019 we helped with a pudding evening organised by William Barnes and Chris Bingley in aid of the hospice. In June a family barbecue was preceded by a display in the hall by Stonham Barns Birds of Prey centre for all the primary school children. In July and August two events on the field included games and food and raised funds for the Blacksmith's Field play equipment fund and for the charity 4Louis, supporting families affected by stillbirth. In September we ran a quiz night and meal and in October the club ran the annual Harvest Horney, advised by the usual hostesses Pam's Day and Primmer followed in November with a Firework Display sponsored by the Parish Council. Next was a folk concert by Martin Joseph which was a sell out. And to round off the year was a candlelit performance in the church of Dicken's A Christmas Carol by Antony Roberts, Director of Colchester Arts Centre and Jamie on the piano. This raised funds for the church roof and Jamie's music charity.

We started 2020 with an excellent Pancake lunch before lockdown hit. Earlier in the year we provided bar facilities for two private parties.

Financially all our events have at least covered their costs, and produced a modest profit for the club but our aim is not to make money but to provide a community service and bring people together, as well as helping charities with funds.

We have improved the bar area and stockroom, and purchased a chiller, coffee machine and fridge. We have been fortunate to receive financial assistance from Cllr Hicks Community Fund, Needham Market District Council Locality grant, the PC, the Coop, and the Rural Coffee Caravan who attended several of our events.

Practical help was given by Brian Day and also by the very hard working committee and of course we are pleased by the support of our events from the village.

Kathryn Martin Chairman.

The Diamond Jubilee Village Hall

CLOSED UNTIL FURTHER NOTICE AS ARE ALL VILLAGE HALLS

IMPORTANT NOTICE - JUBILEE HALL AGM

Under its constitution the Annual General Meeting of the Village Hall will be due to be held no later than Monday 29 June 2020 with notice of that meeting to be published by 14 June 2020. Under the existing “lockdown” arrangements the physical meeting could not currently be held without breaching the government’s regulations. It is possible that the regulations may change sufficient to allow a meeting to be held while maintaining social distance between attendees. The Village Hall Management Committee intends to meet in early June to assess the then current regulations. Depending on whether those have changed the Committee will then arrange either that notice be published to hold the Annual Meeting as normal or, if no sufficient change has then been made, to give notice of an Extraordinary General Meeting whose main business will be to propose the deferral of the Annual Meeting until the autumn of 2020 in the hope that a physical meeting may then be able to be held. Whichever way the decision is made a notice of meeting will be placed on notice boards and on the Village Website no later than 14 June 2020.

Chris Bingley (Chair) Tel 01449 720324. christine.bingley@gmail.com

If, when we finally open, you need a venue for your Event, the Diamond Jubilee Hall is available to hire. It consists of the main hall, lounge with bar, a small meeting room and a kitchen. All these can be hired separately. There is WIFI and a large car park behind the Hall. Details and bookings can be found or made on the village website or contact Richard Hyde, Booking Clerk , 01449 720024

Opportunity for a Communications Volunteer

Creeping St Mary Social Club are looking for someone who would be prepared to help the committee with publicity for club and village events. Expertise and familiarity with social media is the main requirement for this task so that we can spread information about our activities and encourage more people to join us. It should not take a great deal of time. Good communication skills are what we are looking for.

Please contact Kathryn Martin or Jacqui Mann or email the club.

COVID TIMES IN CREETING ST. MARY

Thursday evenings applause for NHS and essential workers

On each Thursday evening since the introduction of lockdown the 8pm national applause for NHS frontline workers together with all essential workers has been supported with great enthusiasm by residents of all ages here in All Saints Road.

In addition to clapping we have improvised percussion instruments for example saucepans and spoons, bells and football rattles in an effort to say thank you to all those in the NHS, care homes, shop staff, transport drivers, postmen, refuse collectors and volunteers who help the elderly and vulnerable members of our community during this most difficult time.

David Primmer



Needham Market church

Ella and Luca Kading



VEDay75

David Primmer

Friday May the 8th All Saints Road remembered VE (Victory in Europe) Day 75 years ago with equal enthusiasm; with displays of bunting and Union Flags; although the lockdown and social distancing constraints meant that the large commemoration events planned across the country had to be curtailed, from 5pm for some two hours socially distanced afternoon teas were taking place with residents able to chat to each other from their front gardens and driveways. Music from the 1940's was played, some residents were colourfully dressed in red white and blue; there was some dancing on driveways and in the road and glasses were raised to neighbours, family and friends and to the generation that saw the country through those most difficult years from 1939 to 1945.

Jacqui Mann

It was a rather inpromptu affair, but probably all the more enjoyable for it! Word spread on Thursday night following the usual clap for our NHS/carers that some neighbours in All Saints Road were planning to set up outside the front of their houses at 5pm to raise a glass and celebrate VE Day!

The flags and bunting were visible up and down All Saints Road and the weather was glorious. By around 4.30pm people started to appear with tables and chairs, picnics and celebratory drinks. Our neighbours, Paul and Yvonne Race also dressed for the event - as you can see from the picture!

In spite of social distancing there was a lovely friendly atmosphere, dancing in the street and a great community spirit. Wartime music playing up and down the road and even some wartime history provided c/o Julie and Steve Barton!

It was a lovely few hours spent amongst the community that we live in. A really memorable evening for all the right reasons!



Pam and Dave Primmer and Yvonne and Paul Race



Lockdown Poem

One day I woke up,
China was shut down.
Country after country they began to
come down.

Italy and Spain had it hard,
So I was scared.

Then so suddenly it hit us,
Everything shut.
No work, no school, nothing.
We were all told to stay home
Except for exercise or food.

You had to stay two metres apart
Which caused long queues.
Everyone wore gloves and masks,
And people missed loved ones.
We all learned about zoom,
And types of video call.

We couldn't thank the NHS enough.
Rainbows, claps and national
silence.

Captain Tom walked laps,
To raise money and awareness.
They were fighting so hard,
To beat this virus.

They set up a hospital
Called the Nightingale, In the Excel
where everything had fell.

We couldn't wait for the day when
There were no new cases,
And when the Nightingale was
closing down.
We would reflect and remember the
lives lost
And hug our loved ones.

We couldn't wait to go back to
school,
And wanted sport to return.
Finally things would open up again,
And plans would be made and kept.

Queenie said We'll meet again like
her Father.
So until then we waited.
Life would never be the same after
2020's Lockdown.

Chloe Hayward

MOBILE LIBRARY

Route 13 to Creting St. Mary

CANCELLED UNTIL FURTHER NOTICE AS ARE ALL LIBRARIES

Suffolk Libraries' mobile library stops at Whissell's Farm at 11.20-11.30 and outside
30 All Saints Road at 11.35-11.45 on Friday every four weeks.

This year they are Jan 24, Feb 21, March 30, April 17, May 15, June 12,
July 10, August 7, Sept 4, Oct 2 and 30, Nov 27 with no visit in December.

You can join (for free) or renew membership and there is a reasonable selection of
books on board. Books can always be ordered from the main library. This somewhat
under-used service can be a lifeline to many - we should support it.

<https://www.suffolklibraries.co.uk/mobiles-home/ipswich-mobile-library-route-13/>



DR DAN POULTER MP

Member of Parliament for Central Suffolk and North Ipswich

As I sit to write this month's article, we continue to live in incredibly challenging circumstances, with the Coronavirus restrictions continuing to impact upon our day to day lives. I'd like to start by thanking each and every one of you for playing your part and staying at home, helping to protect our NHS and saving lives.

During this important national fight against COVID-19, I have been given leave by the Government to return to the frontline of the NHS working as a doctor, but I want you to know that I am still here to help you as your local MP and continue to stand up for the best interests of Suffolk.

I am in touch with my office on a regular basis, where I am briefed fully and give regular instructions on constituency matters and how to help people locally who may be in need. My team and I are working extraordinarily long hours dealing with a hugely increased workload, helping people to access vital daily support, return home from overseas and providing advice to businesses to access Government grants.

We are very lucky indeed to live in Suffolk and I have been heartened to hear so many stories of communities coming together and individuals going out of their way to help elderly and vulnerable neighbours. It is times like these which bring out the best in people and I am proud to call Suffolk my home.

Suffolk's "Home But Not Alone" scheme is an outstanding example of the public and voluntary sector coming together to deliver help to those who need it. The number for those in need of genuine help is 0800 876 6926 lines continue to be staffed from 9am to 5pm 7 days a week.


Many businesses have been in touch welcoming the measures put in place by the Treasury, but of course there are still some who are left behind and falling through the net. The likelihood of social distancing measures lasting for many months, or even a year, is likely to put considerable strain on our pubs and restaurants. That's why I have written to the Chancellor to raise these concerns and I am hopeful that more can be done to help our local businesses and in particular, our pubs, cafes and restaurants in the weeks and months ahead.

As ever, I would like to close by paying tribute to my NHS colleagues, the Police and the many others on the frontline of our public services who are putting others before themselves to help in this crucial fight against Coronavirus.

If you would like my help, please visit my website

Tel: 0207219 7038 www.drdanielpoulter.com
daniel.poulter.mp@parliament.uk

Treating Your Infection

<i>Your Infection</i>	<i>Without antibiotics most are better by</i>	<i>How to look after yourself and your family</i>
Middle-ear infection	8 Days	<ul style="list-style-type: none"> • Have plenty of rest, • Drink enough fluids to avoid feeling thirsty. • Ask your local pharmacist to recommend medicines to help your symptoms or pain (or both), • Fever is a sign the body is fighting the infection and usually gets better by itself in most cases. You can use paracetamol if you or your child are uncomfortable as a result of fever. • Use a tissue and wash your hands well to help prevent spread of your infection to family, friends and others you meet, • Things you can do to treat your common condition can be found via the Practice website  econsult service or the NHS website.
Sore throat	7-8 Days	
Sinusitis	14-21 Days	
Common cold	14 Days	
Cough or bronchitis	21 Days	

Never share antibiotics and always return any unused antibiotics to a pharmacy

For more information on minor conditions visit:
<http://www.nhs.uk/Livewell/Pharmacy/Pages/Commonconditions.aspx>
<http://www.ipswichandeastssuffolkccg.nhs.uk/Yourhealth/Stayinghealthy.aspx>



Pop-Up Chinwag



CANCELLED
Needham
Market

A monthly social group for people aged 65+
in Needham Market & surrounding areas.

First Wednesday of every month

The Burton Room
Needham Market Community Centre
School Street
Needham Market, IP6 8BB
2pm - 4pm

FREE Entry - donations welcome
Enquiries: 01473 298683



07786 381682

Anglia Garden Design & Landscaping

For a friendly service call Sharon

07786 381682

www.angliagardendesign.com

WILLIAM J CROCKER

PAINTING &
DECORATING
SERVICE



TEL: 07814 240840

WWW.WJCPAINTERS.CO.UK

EMAIL: WJCPAINTERS@HOTMAIL.CO.UK



REGISTERED OSTEOPATH

Louise Mallender BSc (Hons) Ost Med

Back & Neck Pain, Joint Problems,
Repetitive Strain, Poor Posture
Muscle Tension,

Station Yard, Needham Market, IP6 8AS

01449 678250 07789 935190

email: louisemallender603@hotmail.com

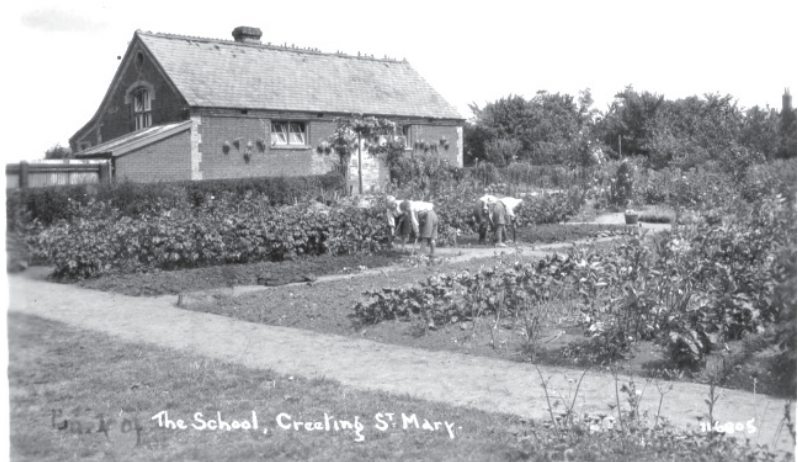
www.ineedosteo.co.uk

Registered with the General Osteopathic Council

A Bit of History

In the last issue, I submitted an edited history of Creeting St Mary Primary School from 1871 up to the end of the Second World War. As promised, in this issue I've extracted some more details about the school's history. The children had sat down to a celebration dinner following the formal opening of the school by the Rector (in 1871) but later in the afternoon they all went to the Rectory for boys' and girls' races, the prizes including stockings and money. There were also races for adults and according to the newspaper report of the occasion "the women outstripped the men".

At the turn of the century the land at the back of the school was given. It was originally used for garden plots, but much later was made into the playing field.



Garden plots at the back of the school

The fairly high wall in the playground which divided the boys from the girls was not taken down until 1955, as it had become unsafe. The school lavatories at that time were very primitive and their condition was criticised constantly by His Majesty's Inspectors. When the school was first built there were about sixty children on roll but by 1889 the number had risen to one hundred and four. Small weekly payments were made by the parents of those times towards the cost of their children's education, and the school also received the Government Grant.

At Christmas time an annual treat was given to the children at Creeting St Mary Rectory, while in summer a choir outing took place. Every two years a treat was given at Bosmere Hall. In 1900 the Relief of Mafeking (May 16th/17th 1900) was celebrated by half an hour's recreation in the morning instead of the usual quarter of an hour (the Siege of Mafeking was an important battle in the South African War, the Second Anglo-Boer War).

Only two references to the First World War can be found in school records, i.e. in April 1915 mention is made of seven girls attending a wartime cookery class at Needham Market and in the following year, children who stayed to dinner had cocoa made for them at school.

In 1940, two air raid alarms were recorded: on September 9th and on October 8th. In 1942, on October 5th, canteen dinners started in Creting St Mary and on October 19th it was reported that two bombs had destroyed Needham Market School, although in actual fact it had been badly damaged.

One of the major problems that arose each winter was that of heating the school. In early days open fires had been used, and in December 1887 the Rector at that time, the Rev. Vidal, had reported: "The open fire is not sufficient to warm the school. Children not immediately near the fire are so cold that they are scarcely able to do their work". The



Picture dated about 1928

installation of stoves in each school room improved the situation but owing to the height of the building much of the heat was lost. In 1970 electric storage heaters were installed in the main building to provide additional warmth when needed.

Electric light had been installed in the school in 1952 and in 1956 mains water was laid on during the summer holiday. Prior to this the water used in the school had been fetched in buckets from a tap in All Saints Road near the old forge. During the Christmas holiday in 1956 two wash basins were put in each porch. By 1963 the school had been connected to the main sewerage system and new toilets had been provided.

1969 saw the formation of the Creting St Mary School Association, now the PSA, Parent/Staff Association. Not only had the Association "furthered the material well-being of the school", as stated in its Constitution but it has also carried out the wishes expressed by the Archdeacon of Suffolk in his address one hundred and forty years ago when he asked all those gathered in the newly built Creting St Mary, All Saints and St Olave National School "to support the school and to further the cause of religious education".

Extracts taken from: - The History of Creting Primary School from 1871
Paul Scully May/June 2020

Tel: 01449 721461 e-mail: paul@impressions41.plus.com

Footpaths and Bridleways

At the moment I'm not aware of any footpaths or bridleways in the parish that are difficult to negotiate and have received no notification from any Parishioners to tell me otherwise – that's great! Mind you, as bushes, trees et al put on their growing spurt in the summer, no doubt we'll have a few problems which will need cutting back. If you have the time, the inclination and the willingness to get stuck into some trimming, then please let me know, along with the whereabouts that you're willing to have a go at, however large or small. If you don't have your own cutting equipment, the use of borrowed equipment can be discussed.

As I write, I'm pleased to say that a very significant amount of scrub has recently been cut-back from the edge of the surfaced footpath (FP58) from Alder Carr Farm entrance to Crown Street Bridge and beyond along the river path. This has made a tremendous difference and has made this route a far more pleasurable walk than it's been in the past. Well done to Tony Clarke Nick Hardingham, who I believe was responsible for tidying up this section.

There are a couple of leaflets covering walks along the River Gipping which can be picked up from two locations in Creeting St Mary; one is from the notice board by Hawks Mill Bridge, the other is from the old telephone kiosk in Jack's Green Road. Both locations also have a large map of the village displayed along with footpaths and bridleways clearly marked.

Paul Scully Tel: 01449 721461 e-mail: paul@impressions41.plus.com



Where is this?

I am sure many of you are exploring the village footpaths more often at this time - so do you know where this path leads?

(answers on p. 33)

Thanks to Chris Bingley and Lizzie

By The Way...

I must tell you about a couple of lads who were walking up at Creeping Hills the other day. They came across a big hole in the ground and were amazed at its size. "Wow!" said the first lad, "that's some hole. I can't even see the bottom of it, I wonder how deep it is." The second lad replied, "Look, there's an old gear box over there, let's throw it in and see how long it takes to hit the bottom".

So the pair of them dragged the heavy old gearbox over to the hole, counted 1,2,3, and heaved it in. As they were standing there looking over the edge of the hole, a goat came crashing through the hedge, ran up to the hole and without hesitation, jumped in head first. They stood there staring at each other in amazement and peering into the hole, trying to figure out what all that was about. Just then, the old local farmer sauntered up and said, "morning lads, you don't happen to have seen my goat have you?"

The first lad replied,

"Funny you should ask that. We were just standing here by this big hole when a goat came running out of the hedge doing about 100 mph and jumped head first into it."

"No lad, that's impossible! I had him chained to an old gearbox."

with apologies from Paul!



Where is this?

....again do you know where this path leads?
(answers p. 33)

Thanks to Chris Bingley and Lizzie

Friendly Badminton

Needham Market Community Centre

Mondays and thursdays

**CANCELLED UNTIL FURTHER NOTICE AS THE COMMUNITY CENTRE IS
CLOSED BUT MAY REOPEN FOR SOME ACTIVITES SOON
contact Joan Hardingham 01449 258099 to find out more**



Creeting St, Mary Voluntary-aided Primary School

CLOSED UNTIL FURTHER NOTICE AS ARE ALL SCHOOLS

Head Mrs. Christine Friar
chool telephone
01449 720312

office@creetingstmary.suffolk.sch.uk
www.creetingstmary.suffolk.sch.uk

Sudoku -fiendish

Like an easier one? Let us know.
Complete the grid using the numbers 1-9
using each number only once in each
row, column or 3x3 box. Solution p. 33.

8	2			6				
		6			9			4
	1		2		4			
			9				8	
2		1				3		7
	5				2			
			4		7		5	
5			1			9		
				3			6	1

RAINFALL IN IP6 8 area 2020.

Month..	Rain in mm.
<u>MARCH</u>	<u>27.0</u>
Last Year	50.0
12 month cumulative.	599.0
Driest March. since 2015 (18.5mm) 10 year Average since then -	24.5mm

RAINFALL IN IP6 8 area 2020.

Month..	Rain in mm.
<u>APRIL</u>	<u>24.5</u>
Last Year	9.0
Total this year	186.5
12 month cumulative.	592.5
Another very dry April – What happened to “April Showers”?	
10 year Average for April	27.0mm

Creting St. Mary Women's Institute

Have you considered joining the WI?

Do you want to socialise and make new friends?



Normally our meetings are held at the Village Hall at 7:30pm on the second Wednesday of the month.

However all meetings have been cancelled till further notice.

We are a friendly WI who welcome members from a wide area. Refreshments are enjoyed after our meetings. We also have walking, lunch and patchwork groups which we hope will be resumed as soon as possible.

It feels like I am writing a page in history in telling you of the loss of our recent meetings. This included our 73rd Birthday Party in April. Unprecedented is a much overworked word at the moment, but nothing else really describes the utter disruption of all our lives at any time since the War.

We have missed at least one Landmark birthday among our members, and also our regular walks and patchwork groups.

Nevertheless, our Members, I know, are keeping in touch by other means, especially with those who live alone. Phone calls, emails to all members including requests for cotton materials for sewing items for NHS and care home needs, where we are helping all we can.

Worrying times, especially, like myself, those of us who have family members active on the health care front line.

Life will never be quite the same again, but we know that more normal times will indeed return and we hope that village life can start to be enjoyed among our friends in the not too distant future.

I keep hearing lovely stories of how we are supporting our friends and neighbours with shopping needs, together with coping with other unexpected crises.

This is where we are so lucky to live in a village such as Creting and have good will and support around us.

Meanwhile, stay safe everyone,

Chris Bingley (Chair)

Tel 01449 720324. christine.bingley@gmail.com



*Professional :: Friendly :: Competitive :: Fully Insured
Tree Work Specialists, Fencing & Garden Services*

Tel: 01449 722795

Mobile: 07825 678760

Email: info@arctreesurgery.co.uk

www.arctreesurgery.co.uk

You Grow It, I'll Mow It!

Grass Mowing
Hedge Trimming
Strimming
Turfing
Fencing



Call Nigel (01449) 721025

P B S Plumbing & Bathroom Services



A Reliable & Friendly Local Service

Bathrooms, Showers, Kitchens & Radiators.
All Household Plumbing Requirements.
Maintenance & New Installations.

Mobile - 07870 989 422.
Evenings - 01449 720095.

* FREE ESTIMATES * ALL JOBS CONSIDERED *
**AVAILABLE EVENINGS & WEEKENDS **

Rosie Hancock

**Certified in Reflexology,
Indian head massage,
Swedish Massage
Also Private Physiotherapist**

**01449 614308
or 07947787343**

Be Amazing and become a
Home-Start Volunteer

**HOME
START**



Because Childhood Can't Wait.

We recruit and train volunteers to support families with children aged 11 and under in their own home. We couldn't carry out this vital work without volunteers, so if you are a parent, grandparent or step parent and can spare 2-3 hours a week to do something amazing, please contact us.

For more information call Linda on 01379 678552
or email office@homestartmidsuffolk.org.uk

Home-Start Mid & West Suffolk Registered charity no. 1127760

HIGH FLYERS SELF-STORAGE

**20' X 8' X 8' CONTAINERS
(1,172 CU.FT)**

**AVAILABLE
FOR RENT**

**HIGHFIELDS FARM, BATTISFORD,
STOWMARKET, SUFFOLK IP14 2HL**

TEL: 01449 722122

WWW.HIGHFLYERSCLOTHING.CO.UK



Stowmarket Group Suffolk Wildlife Trust ALL EVENTS HAVE BEEN CANCELLED

We are a group of volunteers who care deeply about wildlife, for its beauty and diversity and importance to everyone's existence. We support the Trust's aims and vision for a Living Landscape - with nature reserves, Sites of Special Scientific Interest and County Wildlife Sites forming networks of linked-up habitat.

We look after local wildlife reserves:

Work parties maintain Combs and Bonny Woods

SWT Magazine is delivered to local members, saving postage costs.

We organise local events: talks at Stowupland village hall and guided walks. The complete programme can be downloaded from www.suffolkwildlifetrust.org/wildlifegroups

Our local reserves:

Combs Wood, Bonny wood, Bradfield Woods, Bull's Wood, and the Blackbourne Valley.

Our nature reserves remain open for local enjoyment, but please observe Government Advice on accessing Green Spaces:

<https://www.gov.uk/government/news/coronavirus-guidance-on-access-to-green-spaces>.

Suffolk Wildlife Trust offices, centres and hides are all closed and all events are cancelled at this time. See the website for updates.

John Thompson 01449 676471 swtstowmarket@gmail.com

The Swifts are Back!

....and their cousins the Swallows, House Martins and Sand Martins.

That first sighting in May brings such delight and heralds Summer just as the screaming flights of Swifts mark its end. The thought that the swallows have just flown thousands of miles from as far as southern Africa and are here now enthusiastically twittering on the wires is awe-inspiring as is the fact that Swifts spend all their lives when not nesting on the wing.

SWT are keeping an eye on Swifts as, sadly, they are in decline, and are encouraging people to put up special nest boxes and even sound recordings of Swift calls to encourage them.

See <https://www.suffolkwildlifetrust.org/swifts>





Suffolk Sweep

Chimney Sweeping Services



As a member of the Guild of Master Chimney Sweepers I am committed to providing a professional service, ensuring your chimney is kept clean and your home safe.

My services include:

The sweeping of open fires, all solid fuel appliances, gas and oil boiler flues.

Safety inspections and smoke testing.

Carbon monoxide and smoke alarms supplied and fitted.

Insurance ~~company~~ recognised certificates issued.

Fully insured

The safety of your home is paramount and all services are carried out in strict accordance with current regulations and approved sweeping methods.

**Telephone John on 01449 737513
or text SWEEP to 07858768162**

Needham Market and District Horticultural Society

2020 EVENTS HAVE BEEN CANCELLED OR POSTPONED UNTIL FURTHER NOTICE

New and returning members are very welcome.

(first Thursday of the month, Needham Market Community Centre at 7:30 p.m.)

Membership costs just £5 for 2020 and is payable at the event. This includes 9 speakers.

Subjects include Henstead Exotic Garden and "Do plants wear coats?" Our outings take place from late April when we will see thousands of tulips at Ulting Wick; a mid-summer visit to Beeleigh Abbey through to September and a visit to Cambridge.

Our annual supper is held in mid-October at a local restaurant.

Hazel Mackintosh, Joint Events Co-ordinator 01449 720753

VILLAGE WALKS WHERE IS IT?

Page 26 - footpath from Creting main street down to Woolney Hall past the site of St. Olaves Church - Footpath 7.

page 27 - footbridge over the River Jordon between Fen Lane and Low Lane - FP 5

If you don't have one - invest in Ordnance Survey Explorer map 211 Bury St. Edmunds and Stowmarket and consult the village website.

SODUKU SOLUTION

8	2	4	3	6	1	5	7	9
7	3	6	8	5	9	1	2	4
9	1	5	2	7	4	6	3	8
6	4	7	9	1	3	2	8	5
2	8	1	6	4	5	3	9	7
3	5	9	7	8	2	4	1	6
1	6	3	4	9	7	8	5	2
5	7	8	1	2	6	9	4	3
4	9	2	5	3	8	7	6	1

Castell Carpentry

Doors Supplied & Fitted
Shelves & Storage
Cupboards & Cabinets
Fitted Furniture

Call Tom 0757 900 8271

tom@castellcarpentry.co.uk



I bought my mum a present from an online store. I paid extra for next day delivery but it hasn't arrived. I tried to contact the delivery company but wasn't able to speak with anyone. The online store has said my parcel is with the delivery company and should arrive soon. If it doesn't arrive soon, it won't be ready to send to Spain in time for her birthday. What can I do?

You paid for next day delivery so your goods should be delivered on the agreed date.

Because you bought something from a business to be delivered to you, it's the seller's responsibility to make sure the item is delivered.

As the seller used a courier, they should chase the courier to find out what's happened to your order - it's not your responsibility.

If you want the item:

Under the Consumer Rights Act, you can ask the seller to deliver the item again if the item wasn't delivered by the agreed date.

Other steps to take if you want the item could be:

- Cancel your original order and reorder it again from the same or a new online store
- Check if a local store stocks the item(s)
- Keep trying to contact the delivery company via tracking tools/phone/email

If you want to cancel your order:

You can cancel and ask for your money back because you haven't received your goods on the agreed date. Tell the seller that what has happened to your order is "a breach of contract under the Consumer Rights Act 2015" - as the delivery date was essential and they didn't meet it.

You can find useful template letters and your rights on the Citizens Advice website.

Citizens Advice Mid Suffolk can provide advice on this or any other issue, including debt, housing, benefits and family law. You can contact them on 01449 676060 or go to the Advice Centre on 5 Milton Road South, Stowmarket. For more information and our opening hours go to midsuffolkcab.org.uk.

STOWE VETS

Veterinary services during coronavirus outbreak

As a vital front-line service, veterinary practices are OPEN during COVID-19.

Please don't walk into the practice. We need to keep everyone safe. Instead, please phone us and explain your situation. We'll arrange a suitable way of conducting your appointment that is in everyone's best interests. There are a variety of options available to everyone - the important thing is to let us know and we'll work together.

All clients are being offered video or telephone consultations for situations where a visit to the surgery might not be possible or essential. The vet will assess each situation individually and provide the safest solution for you and your pet. If following the consultation the vet does need to examine your pet, we will book you a drive-in appointment and ask that you call us on your arrival and one of our team will come out to collect your pet.

For any emergencies, we'll ask you to attend the practice immediately.

Services we are currently providing:

- the treatment of ill pets
- delivery of pet food
- essential vaccinations
- essential operations
- supply of animal medicines and supplements
- emergency services.

We can provide primary vaccinations to puppies and kittens and their first-year booster and adult dog/cat vaccinations that are close to expiry (16 months). In line with Government guidelines and support of our NHS colleagues, we are using our resources such as PPE and medical supplies very carefully and limiting routine operations (such as neutering) to those that are considered essential after veterinary evaluation.

Doorstep deliveries

We can supply repeat medications, flea and worming treatment and pet foods, with free local delivery, contactless collection or postage. Please telephone to place your order and make payment. For any products you would like to order, simply call us to arrange for payment and safe collection or free delivery.

Self-isolating clients

For our elderly and vulnerable clients who are unable to leave the home, please call us to see how we may help you during this time.

Our NHS colleagues, carers and many others are fighting a difficult battle at this time and we are committed to supporting them in reducing the risks of COVID-19 spread.

We thank you for your co-operation in advance and for your support of our teams that are working under immense pressure in these difficult times to help keep your pets healthy.

The Mustard Pot Surgery- 01449 722198
Stowe Veterinary Centre - 01449 613130

Another Bit of History – What's in a Name?

I've been asked if I could look into the meanings or origins of local place names in and around our Parish. I'll see what I can find out but in the meantime, where we live seems a good place to start - Creting St Mary. The Romans were masters of this territory for about 400 years before it got its present name and the Iceni were masters here for centuries before the Romans conquered it. The name Creting originated from, "Settlement of the family or followers of a man named Craeta (old English), a settlement that evolved about A.D. 480-500. Six centuries later, in 1086, the Domesday Book was compiled and recorded freemen who were landowners at the Cretings before William the Norman gave their acres to his followers (the settlement was then recorded as Cratingas).

Creting consisted of four manors each of which had their respective church; St Peter's (known formerly as West Creting and subsequently as Creting St, Peter), St Olave's, All Saints' and St Mary's. Creting St Peter's Church still exists in its own parish, Creting All Saints church (which stood in the current grounds of St Mary's Church) being already somewhat dilapidated, suffered badly in a storm in October 1800 and the Bishop's permission to demolish was given in October 1801. St Mary's church still stands – but what about St Olave's Church? What happened to that?

St Olave's is said to have been standing in 1532, when John Pinkney was buried in its chancel. Church-returns of 1553 omit it. According to local tradition, it stood opposite Woolney Hall in what is known as Low Road. In 1735, a visitor to the site recorded 'Church down. Hath been long down'. Its ruins were visible until the early 20th century. An archaeological survey was carried over the Millennium period when foundations and many artefacts of St Olave's Church were discovered. An illustrated information board exists in the grounds of St Mary's Church and another one is at the location of St Olave's Church opposite Woolney Hall.

Acknowledgment: - Extracts from the books

"Suffolk's Ancient Sites – Historic Places" Mel Birch 2004;

"Suffolk or, Original Delineations By Mr Shoberl 1818"

Paul Scully



Creting St Mary
Photograph taken from the air ambulance by
Dr. Nicola Ebbs, Summer 2019

For Sale

Copies of this wonderful photo taken by Dr Nicola Ebbs from the East Anglian Air Ambulance are available for sale with the proceeds going to the East Anglian Air Ambulance.

Prices:

A4 format £25 framed (plain black) - £20 unframed

A5 format: £15 framed - £10 unframed.

£5 from each sale will be donated to the air ambulance.

To order copies please contact:
Steve Fernie at Creting House
(opposite the church)
steve@cretinghouse.com or
phone 01449 720988



**The Limes
Hotel,**
Needham Market
is under new
management!

Open Daily from
11am for:

Teas & Coffees, Lunches & Light Bites,
Evening Meals & Drinks in Bugs Bar.

We also have a fantastic party venue,
meeting room, 11 bedrooms & ample
parking.

Call 01449 798401 or just pop in!



SUFFOLK

GARDENING THYME

Mowing, Planting, Pruning, Training,
Hedges, Tidying, Feeding

07736 348 545 | @suffolkgardeningthyme
suffolkgardeningthyme@gmail.com

GENERAL INFORMATION AND CONTACTS

Creeting St Mary Newsletter:

Editors

Content: Joan Hardingham, Alder Carr Farm,
creetingnewsletter@gmail.com

Liaison with contributors and advertisers:

Kathryn Martin,
creetingnewsletter@gmail.com

Advertising: Jennie Blackburn (01449) 721369
clerk.csm pc@yahoo.co.uk

(Advertising rates are on page 35)

Distribution: Kathryn Martin (01449) 720491

Newsletter deadlines: the 20th of the months of:

September (Oct-Nov edition i.e early December and Christmas events)

November (Dec-Jan edition)

January (Feb-Mar edition)

March (Apr-May i.e. Easter)

May (Jun-Jul i.e. all those mid- summer events)

July (Aug-Sep - the summer holiday events)



Creting St Mary Parish Councillors

Name	Portfolio
Sue Haynes	Chair - 01449 722570
Roger Coton	SALC - 01449 721526
Christine Bingley	Village Hall Management Committee - 01449 720324
Paul Scully	ootpaths and Bridleways - 01449 721461
Jan Palmer	Blacksmiths Field - 01449 723997
Hugo Craggs (Vice-Chair)	CiL and Sustainability- 07815137228
Lesley Plummer	new councillor 01449 720359
Chris Emmins	new councillor 07894231165

To contact any of the parish councillors, please contact the Parish Clerk first

Parish Council Clerk : Jennie Blackburn - 01449 721369

or email: clerk.csm pc@yahoo.co.uk

Meeting agendas and dates are placed on the village noticeboards during the week prior to the meetings, and also on the website.

Creeting St Mary Website

Alastair Rogers: (01449) 720580 a.s.rogers@qwic.co.uk;
www.creeting-st-mary.suffolk.gov.uk

Diamond Jubilee Village Hall

Chris Bingley (Chair) (01449) 720324. christine.bingley@gmail.com
To hire: Richard Hyde Tel: (01449) 720024; creetingjubileehall@gmail.com

Creeting St Mary Social Club: csm_socialclub@outlook.com.

Creeting St Mary Neighbourhood Watch Representatives:

Bill Mackintosh: (01449) 720753

Sue Haynes: (01449) 722570

Creeting St Mary Footpaths Paul Scully 01449 721461

e-mail: paul@impressions41.plus.com

Creeting St Mary Welfare Charities Mr. D. Primmer, 30 All Saints Road,
Creeting Saint Mary, IP6 8NF 01449 721514

County Councillor for the Thredling Division: Matthew Hicks

Tel: (01728) 628176 ; matthew.hicks@suffolk.gov.uk ; Twitter: @HicksCllr

Mid Suffolk and Baburgh District Councillors:

Mike Norris - mike_norris@hotmail.co.uk 01449 720871

Steve Phillips - steve.179@icloud.com 01449 721710, mob. 07794823323

Member of Parliament for Central Suffolk and North Ipswich

Dan Poulter Tel: (01728) 726588 ; daniel.poulter.mp@parliament.uk

Twitter: @drdanpoulter

PARISHES:

Rev'd Philip Payne, Priest-in-Charge North Bosmere Benefice

The Rectory, The Street, Stonham Aspal, IP14 6AQ

01449 711684 revphilippayne@btinternet.com

CSM Newsletter – Advertising Costs

Bi-monthly issues (June/July; Aug/Sept;

Oct/Nov; Dec/Jan; Feb/Mar; Apr/May)

Deadline 20th of month previous.

One insertion (depending on space)

Full page - £20

1/2 page - £15

1/4 page - £10

1/8 page - £5

Series of 6 adverts:

Full page - £108.00 (inside) / £125.00p.a.
(outside)

1/2 page - £75.00

1/4 page - £48.00

1/8 page - £24.00

An editorial piece about your business
(approx 100 words) can be put in annually.

The Mustard Pot Veterinary Surgery

For a professional caring service



Tel: 01449 722 198

Coddenham Road, Needham Market, IP6 8NU

A member of Stowe Veterinary Group
www.stovevets.co.uk

