

The Creeping St. Mary Newsletter



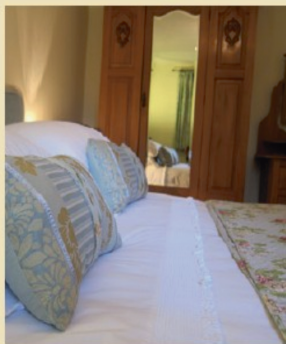
HARVEST TIME



Volume 38/4 August and September 2020

Upper Langdales Farmhouse Cottages

Creting St Mary, Suffolk



Retreat to our fabulous collection of lovely holiday cottages
offering peace and tranquility in a beautiful location

Relax and enjoy the serenity of Suffolk

01449 721246 | 07789 458923 | www.upperlangdalesfarmhouse.co.uk

Editorial Comment

No-one can deny things have changed, but in all the doom and gloom, worry and hardship, there are beacons of light, changes a-foot and surprising progresses made, not least in our own little corner of the world.

The people running things - making sure we are all well-catered and cared-for have stepped up to the mark and while we weren't looking the Parish Council have continued their meetings on-line. A new trim trail has been installed on Blacksmith's Field and with the play area now open there is no excuse not to get outside. The County Council has gone to great lengths to ensure they are prepared for any future challenges. Broadband, which we have come to rely on so heavily is improving all the time. The District Council is doing its best to help small businesses and communities with grants and warns us of the ever-present scams linked to the current crisis. At the Parish Council level there are offers of help in the village to those not quite coping with the current situation. Never has it been clearer that we have to be grateful to these people and those supplying us with essential services and food.

So it is time to re-open doors that were closed and open new ones. The Church, the Village Hall and local organisations such as the SWT are tentatively re-opening. Get on your bike (or feet) for Ride and Stride or help with the Churchyard tidy-up. Support local clubs when they re-open. There are many community organisations that are in danger of losing too many members to be viable if we do not.

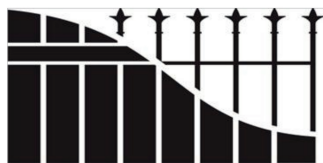
We have come, increasingly to realise the importance of plant-life in our environment and for own well-being, so take part in the Big Butterfly Count and get about on the village footpaths - looking for those 'bits of history'. Tree-planting is the thing, with both the Woodland Trust offering trees to communities and landowners and the District Council offering 'Trees for Life' to new parents.

We need to look closely through some rather high-level doors - particularly where major changes are taking place as we leave the EU - food standards being one which our MP draws attention to.

So above all heed the new mantra and 'stay safe' and keep looking for new doors to open.

As always may I thank all those who have contributed to the Newsletter in particular my co-editor Kathryn Martin who does all the running around!

Joan Hardingham co-Editor



**CLARKE
FENCING LTD**
TEL 01449 614939

For the best Fencing Products in East Anglia, why not come and visit our new premises:

Unit 3, Stowmarket Business Park, Ernest Nunn Road, Stowmarket, IP14 2ED

Not only have we expanded our premises but we have also expanded our product range:

Closeboard, Larch Lap, European Decorative Panels, Trellis, Post and Rails, Gates.

Sheds, Dog Kennels, Summer Houses and Children's Play Houses.

Electric Fencing for Horses and Cattle as well as Stock Fencing.

Decking, Planters, Picnic Tables, Sleepers.

Ironmongery, Wire Netting, Chainlink, Ronseal Preservatives, Tools.

Cement and Ballast, Ply Wood, Protective Clothing.

** Free No Obligation Quotations * ~ ~ * We Supply & Fit to Trade and Public **

Email: info@clarkefencing.co.uk

www.clarkefencingltd.co.uk

**E&D Boiler
Maintenance Ltd**



LOCAL, PROFESSIONAL, ESTABLISHED SPECIALISTS IN

Oil, Gas & LPG

Servicing, Breakdowns, Repairs and Installations

All makes covered including:

Grant, Worcester Bosch, Boulter Camray, HRM Wallstar, Vaillant, Baxi.



Upper Church Farm, Finningham Road, Rickinghall, Suffolk, IP22 1LP

**Telephone
01379 898574**



www.boilerrepairsuffolk.co.uk

CREETING ST MARY PARISH COUNCIL NEWS

Coronavirus (Covid-19)

Due to the ongoing circumstances, the Parish Council continue to hold their meetings online via Zoom. These meetings will be published on the village website and noticeboards as usual. If any members of the public wish to attend please contact the Parish Clerk clerk@csmmpc.co.uk

Please keep an eye on our website/Facebook page for possible changes to dates and times and for further information when meetings will revert to being held in person.

Play Equipment

The new play equipment and trim track have now been installed, which I am sure you will agree has been a beneficial addition to Blacksmiths Field.

Please Note – Whilst the play equipment is now able to be used, the consumption of food and drink in the play equipment area is banned and parents and guardians are required to do the following:

- bring their own hand sanitiser for the cleaning of their children's hands before, at regular intervals during, and after use of the playground equipment. In the absence of such sanitation parents or guardians are requested to refrain from allowing use of the equipment.
- ensure physical distancing between children at minimum distance of 1 metre.
- To advise children to avoid touching their face, eyes, nose and mouth.
- To ensure children under your care have regard to the safe use of equipment and to the safety of others at all times.
- To adhere to the most up to date health advice.

County Councillor's Report

New plan sets out how Suffolk will prevent and respond to COVID-19 outbreak - A plan which sets out how Suffolk would prevent and respond to a localised outbreak of COVID-19 was published on 30 June. Suffolk's Local Outbreak Control Plan will be triggered where there are suspected or confirmed COVID-19 outbreaks in any setting or community within the county. The plan, a requirement of Government of all local authorities, outlines measures to prevent, manage, and contain outbreaks of Coronavirus and protect the public's health. It builds on existing relationships and processes in place with partner agencies across Suffolk. The plan outlines how complex cases will be managed in more than 30 high-risk places, locations, and communities, particularly care homes and schools. It also outlines local testing capacity, use of data to identify and pro-actively manage outbreaks, and contact tracing in complex settings. An outbreak is defined when there are two or more cases in high-risk settings, or a greater than expected occurrence of COVID-19 compared with the usual level for a particular place and time. COVID-19 has had a significant impact on all of our lives and, sadly, we will be living with the threat of the virus for many months to come. Whilst this plan outlines how Suffolk will best respond to outbreaks, prevention of the virus is absolutely vital in making sure the number of new cases continues to decline in Suffolk. We must all continue to follow social distancing guidelines and ensure we wash our hands regularly, to avoid a second wave of the pandemic. If you develop symptoms of corona virus, make sure you get a test and isolate at home. Delivery of the Local Outbreak Control Plan will be co-ordinated by the Suffolk COVID-19 Coordination Centre. All information (including outbreak notifications) and national guidance will be received here, which enables a co-ordinated response and allows tasks to be allocated to the most



Andrew Bingham

INDEPENDENT FUNERAL SERVICE

Local Caring Independent Funeral Service

24 Hour Personal Service

Qualified

Experienced

www.andrewbingham.co.uk

01449 771666

The Nutshell, Milton Road South, Stowmarket, IP14 1EZ



Golden Charter
Funeral Plans



Helping Hands

Handyman Service

All aspects of Home & Garden Maintenance carried out

Painting & Decorating

Tiling

General DIY

Decking, Patios & Fencing

Any type of work considered
No Job too small - need a helping hand?

Call Kevin

01473 839006 - 07513107911

CHIMNEY SWEEP

ECO SWEEP

CHIMNEY SERVICES

- NEW POWER SWEEPING METHOD USED FOR A MORE THOROUGH CHIMNEY CLEAN THAN BRUSHES.
- INDUSTRIAL HEPA FILTERED VACUUM.
- FULLY INSURED.
- INSURANCE RECOGNIZED CERTIFICATES ISSUED.
- SPOTLESS, RELIABLE AND FRIENDLY SERVICE.
- ALL CHIMNEYS, WOOD BURNERS, AGA, BOILER FLUES SWEEP.
- GUILD OF MASTER SWEEPS CERTIFICATED MEMBER.



Power sweeping



TEL. 01359 232335

appropriate partners. Suffolk has received £2.79million from a £300million Government fund to support delivery of the Local Outbreak Control Plan. For more information visit: www.suffolk.gov.uk/coronavirus-covid-19/suffolks-response

Suffolk's resilience partners continue to provide PPE equipment where most needed - As Suffolk's response to the Covid-19 pandemic enters its fourth month, the team set up in March to source and distribute personal protective equipment (PPE) to support service providers across the county continues to operate from Suffolk County Council's offices in Ipswich. To date, this PPE 'cell' of the Suffolk Resilience Forum (SRF) has distributed over 2.3 million items of PPE across Suffolk. Over 1.9 million of these items have been distributed for use in the care sector to support some of Suffolk's most vulnerable residents. This equipment is directly supporting a range of staff every day, providing them with the masks, gloves and other disposable protective items needed to ensure safe working and effective infection control in care settings, social care, special schools, emergency services, and health organisations. As service providers increase contact with residents and reopen, or plan for buildings to reopen in weeks to come, Suffolk's PPE team will continue to purchase and distribute equipment where there is a shortfall in supply, or where organisations identify an urgent need. As the pandemic really took hold in late March, it was vitally important that we quickly established a team to source and distribute PPE where it was needed most. This was especially important given the increased demand for personal protective equipment across the UK, and the world at that point. Suffolk's team continues to operate and the SRF is keeping a close eye on levels of demand to understand if, and when, we need to scale back operations.

Temporary relaxation of concessionary travel arrangements in Suffolk to end next month - As more people return to work, public transport operators face the challenge of meeting this extra demand and ensuring adherence to Government guidance. Passenger numbers are highest at the beginning and end of the day, so people who need to make essential journey for shopping, care or health reasons are being encouraged to travel after 9.30am when buses are currently quieter. Suffolk County Council and bus operators in the county have agreed to end the temporary relaxation of concessionary travel rules from Monday 6 July 2020. The relaxation was introduced across Suffolk in late March and allowed those with concessionary passes to travel on buses for free before 9:30am. The aim was to provide more flexibility for older people, and those with disabilities, to visit supermarkets during the lockdown. Now that more people are returning to their workplaces and children are going back to school, it is important that we take steps across the county to protect passengers. It is vital we help bus operators balance the need to get people to work and children to school, while maintaining social distancing and adhering to Government guidelines, so this means staggering the times when passengers travel. The relaxation of the concessionary travel scheme was a temporary measure to address the situation at the time. The situation has changed, and we are now facing a new set of challenges. Therefore, I urge people to only use public buses for essential journeys and to travel after 9:30am where possible. From Monday 6th July concessionary bus passes in Suffolk will only be valid Monday to Fridays 9.30am to 11pm, and all day on Saturdays, Sundays and Bank Holidays. Also, all passengers are now required to wear a face covering on public transport. For more information about concessionary travel in Suffolk, visit suffolkonboard.com. An alternative travel option for elderly and vulnerable passengers is the county's Connecting

GUDGEONS PRENTICE

SOLICITORS

TELEPHONE: (01449) 613101 | EMAIL: info@gudgeons-prentice.co.uk

BUTTERMARKET | STOWMARKET | SUFFOLK | IP14 1ED

www.gudgeons-prentice.co.uk

GUDGEONS PRENTICE are local solicitors and specialist in:-

Wills and Probate

Powers of Attorney

Residential Conveyancing and Commercial Property

Landlord and Tenant

Divorce, Financial Matters, Separation, Child Welfare and Other Family and

Matrimonial Matters

REGISTERED OSTEOPATH

Louise Mallender BSc (Hons) Ost Med

Back & Neck Pain, Joint Problems,
Repetitive Strain, Poor Posture
Muscle Tension,

Station Yard, Needham Market, IP6 8AS

01449 678250 07789 935190

email: louisemallender603@hotmail.com

www.ineedosteo.co.uk

Registered with the General Osteopathic Council

Communities demand responsive services, Monday to Friday 7am to 7pm. For further details at communities.suffolkonboard.com or by calling 0345 606 6171.

Better Broadband for Suffolk reaches 100,000th customer as 3rd phase contract is agreed - More than 100,000 households across Suffolk are already using faster broadband, thanks to the council-led Better Broadband for Suffolk programme. The partnership - between Suffolk County Council, Openreach, the Department for Digital, Culture, Media and Sport (DCMS), the New Anglia Local Enterprise Partnership (NALEP) and local councils – has made faster broadband available to around 150,000 premises since being launched in 2010. It means the current total superfast broadband coverage in Suffolk stands at more than 96 per cent, with plans currently in place to reach 98 per cent coverage before the end of the year. The team has plans to go even further, after announcing, on 3 June, an additional phase of work to provide connectivity to approximately 5,000 more premises, including over 550 businesses, in some of the most rural parts of Suffolk. The work will be carried out by Openreach – operator of the UK's largest phone and broadband network, used by the likes of BT, Sky, Plusnet, and TalkTalk – and is set to start as soon as deployment under the current contract ends. Work will continue until September 2022. Faster broadband provides many benefits including staying in contact with friends and family through video conferencing services, easier web browsing and online shopping, the ability to stream high definition video, and work from home. Covid-19 has led to many of these benefits becoming more crucial during times of social distancing and will play large part in the recovery phase.

Matthew Hicks - County Councillor for the Thredling Division

Tel : 01728 628176 Mob : 07824 474741 E-mail : matthew.hicks@suffolk.gov.uk

District Councillor's Report

We are rooting for new parents during COVID-19 and beyond - A Tree for Life scheme in Babergh and Mid Suffolk which offers a free tree for new parents, is now open for 2020 applications allowing families to apply from home during the coronavirus outbreak. For details of how to apply, please refer to MSDC's website.

New grant scheme opens for small businesses - A new Discretionary Grant is now open for businesses based in shared offices or other flexible workspaces, market traders, bed and breakfasts and small charity properties. For details of the application procedure, please refer to MSDC's website.

Suffolk works on creating safer places as lockdown measures ease - Businesses, towns and spaces in Suffolk are getting extra help to make them safer and reduce the risk of COVID-19 spreading as lockdown measures are eased.

Communities benefit from Coronavirus funding boost totalling over £100,000 - Communities have received more than £100,000 in vital funding from Babergh and Mid Suffolk District Councils – helping them to respond to Covid-19 and paving the way for a stronger society. For details of how to apply, please see MSDC's website.

Small businesses to benefit from new innovation and growth fund - A new £300,000 funding programme for small businesses across Babergh and Mid Suffolk has been agreed - with funds to be allocated over the next three years. This will provide a much needed boost to businesses to help sustain and create jobs, provide opportunities to grow and innovate and react to the changing business landscape.

Coronavirus cons - opportunistic traders and scammers are taking advantage of the vulnerable panicked by COVID-19. To help make Suffolk safe to live and work in, register to be a Trading Standards Consumer Champion and receive a weekly email



FARM SHOP CAFE DELI BUTCHERY PLANT CENTRE

delicious local and artisan food and groceries

butchery with farm raised and local meat

a wide range of cheese and savouries

fresh bread from Wooster's and Palmer's Bakery

dairy products

ready meals by Cook

frozen fruit and vegetables

vegetarian, gluten-free and vegan ranges

Eco household and toiletries

A wonderful selection of plants from Katies's Garden

Plant pots and compost

Coping with Covid-19

We would like to thank all our customers for their support and understanding.

We are following Government guidelines and limiting numbers in the farm shop with 2m. "social distancing". Please restrict the number of people in your group in the shop to one or two and don't enter if unwell. We have done everything we can to safeguard customers and staff through thorough cleaning and ample screening.

Customer Support collection service from the car park.

For vulnerable and self-isolating customers we have non-contact collection. Email or ring with your order and we will contact you for payment over the phone and arrange a time for collection.

On arrival, phone to let us know you are here and we will bring it out to you.

limited home deliveries

For vulnerable & self-isolating residents of Creting St Mary & Needham Market.

The play area, nature trail and farm animals can be enjoyed

Cafe and Workshop Units are now open

The courtyard has been resurfaced and significant changes made to ensure social distancing measures are in place. Please follow the signs.

farmshop@aldercarrfarm.co.uk. t: 01449 720820

www.aldercarrfarm.co.uk and Facebook

alert with information on scams and any doorstep rogues calling at properties so you can alert your neighbours or residents. Please refer to MSDC's website.

Mid Suffolk District Councillors Mike Norris mike.norris@midsuffolk.gov.uk Tel. 01449 720871 and Steve Phillips stephen.phillips@midsuffolk.gov.uk Tel. 01449 721710. Representing Needham Market, Badley, Baylham, Creting St Mary, Creting St Peter, Darmsden.

Planning Applications Considered

Ref: DC/20/02176 - Householder Application - Erection of orangery - Location: New Dwelling, All Saints Road, Creting St Mary – No Objections

Recent Planning Application Decisions

Ref: DC/20/01380 - Notification under Schedule 2 Part 3 Class Q of the Town and Country Planning (General Permitted Development) (England) Order 2015 Proposal: Application to determine if Prior Approval is required for a Proposed Change of Use of Agricultural Buildings to Dwelling houses (Class C3) and for building operations reasonably necessary for conversion. Town & Country Planning (General Permitted Development) Order 2015 as amended Schedule 2, Part3 Class Q - Conversion of agricultural building to form 1no. dwelling - Field Adjacent Hill View, Green Lane, Creting St Mary – REFUSED

Ref: DC/20/01232 - Full Planning Application - Erection of 4no. dwellings and 4no. garages including alterations to existing access and creation of new vehicular access Poplar Farm, All Saints Road, Creting St Mary, Ipswich Suffolk IP6 8PJ – GRANTED

Ref: DC/20/01714 - Full Planning Permission - Erection of 1no. dwelling - Shangri La, Creting Bottoms, Creting St Mary, Ipswich Suffolk IP6 8PH - GRANTED

Details of forthcoming meetings and copies of Parish Council Meeting minutes can be found on the village web-site. If you have any concerns or queries to address to the Parish Council, please contact Jennie Blackburn, Parish Clerk by e-mail @ clerk.csmpec@yahoo.co.uk or phone 01449 721369 (answer phone) or come along in person to the next meeting.

Jennie Blackburn, Parish Clerk

Parish Council support to the Community in Covid Times

Support at a community level continues to be to be vitally important and the Parish Council want connect those who need help to those who can give it.

If you can help a neighbour with: shopping, postage, urgent supplies or just a chat contact one of the below so we can collate the details.

Hugo Craggs: 07815 137228 hugocraggs@gmail.com
Lesley Plummer: 07889 272856 andaxi@btinternet.com
Sue Haynes: 01449 722570 susannehaynes@talk21.com
Jan Palmer: 01449 723997 cretingtog@gmail.com
Chris Emmins: 07894 231165 chrisemmins@offshorenrg.com
Roger Coton: 01449 721526 rogercoton@btinternet.com
Paul Scully: 01449 721461 paul@impressions41.plus.com
Jennie Blackburn: 01449 721369 clerk.csmpec@yahoo.co.uk

Details on Creting St Mary Parish Council Facebook page
<https://www.facebook.com/Creting-St-Mary>

Ed: if you are unsure of an approach you have had offering help, please consult the people on the list above.

Friendly Badminton Needham Market Community Centre

Mondays and thursdays

**CANCELLED UNTIL FURTHER
NOTICE AS THE COMMUNITY
CENTRE IS CLOSED BUT MAY
REOPEN FOR SOME ACTIVITES
SOON**

**contact Joan Hardingham 01449
258099 to find out more**

BHS 2026 - Historical Researcher

The
British
Horse
Society

Do you hack out? Do you know whether the routes
you ride on are legally recorded?

"Find the missing pieces, fill in
the gaps, complete the jigsaw!"

On 1st January 2026, historical routes in England that aren't properly recorded will be lost to the public forever. We are looking for people to volunteer their time to help us identify and register these routes before it's too late.

2026 research can be really flexible and done as and when you have time and energy. We are keen to hear from volunteers with a range of skills and abilities, which may include:
solving puzzles, map reading or an interest in local history.
Support, training and expenses provided for all 2026 volunteers.

If you would like to register to support the BHS 2026 project in your area, please contact our Volunteer Support Team at volunteer@bhs.org.uk

The British Horse Society is a Registered Charity Nos. 210504 and SC038516



CREETING SAINT MARY WELFARE CHARITIES

The Creeting Saint Mary Welfare Charities Trust can provide assistance for those in need, hardship or distress by reason of, age, illness, unemployment, the need to continue in further or higher education.

SOME EXAMPLES OF POSSIBLE GRANTS

Annual grants to those receiving state pension in financial need.

Grants toward the relief of general hardship.

Grants for students who are in higher or further education.

Help with aids to cope with disability not available from state funding.

Grants towards maternity costs.

Grants towards funeral expenses.

Help towards cost of personal Pendant Alarms for the elderly.

The Trust is intended to benefit the residents of Creeting Saint Mary, however, in exceptional circumstances the Trustees may consider applications from persons who are resident outside the Parish.

TRUSTEES: Mr. P. Stephenson (Chair) Mr. D. Primmer (Hon. Clerk)

Mrs. M. Aldred, Mrs. P. Day, Mrs. K. Martin,

Please make any enquires to :

Mr. D. Primmer, 30 All Saints Road, IP6 8NF Telephone 01449 721514



From the Rectory

Rev. Phillip Payne

UNLOCKING

Slowly the key turned and the latch lifted. As the door opened, sunlight streamed in, accompanied by the sound of happy but hesitant voices. Lockdown is slowly lifting.

It has been a strange four months. At one and the same time, we have been locked in and locked out. Locked into home and, for some, work of physical and emotional intensity few could have imagined; locked out of much else. As with place, even more so for people. We have been denied the opportunity to visit friends and family, to encounter strangers, to share the intimacy of face-to-face encounter. All of us have been locked out of many of the places and human encounters that give our lives purpose and meaning. Now, the doors are unlocked and we take our first cautious steps across the threshold. Longing for a return to normality, we wonder cautiously; 'is it safe', 'what will normality bring?'

As with our neighbour, so with God: Church buildings have been closed, church services moved to the internet, weddings delayed, farewells restricted, and the space to encounter God or neighbour in the peace of our ancient buildings denied. It's a new experience for us, yet all too common for many. Ancient Israel experienced exile, the temple not just closed but destroyed. Across the globe, when communities face persecution, meeting together openly for worship and fellowship is denied and places of public worship are often among the first to be closed. Four months is but a short interlude.

Time and again this experience of exclusion has given birth to new life. When the temple closes God shows he is not confined to time and place. St Mathew records Jesus closing words to his disciples as "I am with you always, even to the end of time" (Matt 28:20). Thus empowered, the human spirit makes new connections. As one door closes, a patient God gives his people time to pause before opening a new door, and offering a fresh opportunity. Now doors are beginning to open once more and with them will come new possibilities. With thanks step patiently into the light. Do not look back to what was but forward too where he is leading next.

Rev'd Philip Payne, Priest-in-Charge North Bosmere Benefice
The Rectory, The Street, Stonham Aspal, IP14 6AQ
01449 711684 revphilippayne@btinternet.com



CHURCH SERVICES

St. Mary's Church,
Creething St Mary

St. Peter's Church
Creething St. Peter



NORTH BOSMERE BENEFICE

By the time this newsletter reaches you most of our church buildings should be open for services and private prayer at least one day a week.

In particular: private prayer at

Creething St Mary church - Sundays 2pm to 4pm.

Creething St Peter church - Sundays 10am to 5pm.

Church Services

from Sunday 9th and the remaining Sundays in August:

9:30am - Holy Communion - Coddtenham

Sunday 16th August. Morning Prayer (BCP) - Creething St Mary at 11.00am.

Sunday 23rd August. Evening Prayer - Gosbeck at 6.30pm.

North Bosmere Benefice Sunday morning worship on-line

from Sunday 9th August our regular On-Line (Zoom) service will move to 10:30am. If you haven't joined us before and would like to, please send an email to reader.ruthdennigan@gmail.com. Before the worship starts you will receive an email from Ruth with a link to click on.

Services on Radio and TV.

The Diocese is streaming church services via Facebook daily:

Sunday -10am Eucharist, 3.30pm Evening Prayer

Monday to Friday, 8.30am

- Morning Prayer, 12 noon Eucharist, 5pm Evening Prayer

Saturday - 8.30am Morning Prayer, 3.30pm Evening Prayer

Sunday service at 8am - BBC Radio Suffolk and at 8:10am - BBC Radio 4

Daily service is 9:45 am on BBC Radio 4 (Long Wave or BBC Sounds).

Songs of Praise at 1:15pm on BBC1.

For further information, contact:

Rev Philip Payne 01449 711684 revphilippayne@btinternet.com

Creeting St Mary Church reopening.

**Creeting St Mary Church is now open on a Sunday for private prayer
Opening hours will be 2pm to 4pm.**

Please use the main door at the south porch for entering the church where sanitiser will be found. Please leave by the north door.

A group of people met recently and made the church a safe place to be in.

Thank you to Bill Mackintosh for completing the risk assessment.

We hope you will visit our church for quiet contemplation.

The Church yard has been beautiful this year with wild flowers every where.

Thank you to those people who have worked on their own.

Churchyard Tidy-up

It's now time for an early tidy up before the big tidy up later in the year.

We are proposing a get together on Saturday 8th August 10.30-12.30pm.

Any one wishing to help would be very welcome, there will be refreshments during the morning. We have some tools but please bring your own.

Thank you very much.

Glynis Clint.

Memorial Lilies

At the time of writing at the start of July we do not know if we will be permitted to have a Harvest Festival in the church. We had hoped to have our floral memorial for our loved ones, postponed from Easter due to church closures, at our Harvest Service. We do not know either if lilies will be obtainable at the usual cost, out of season.

It is suggested therefore, should the above be impossible, that the money already collected should be retained for Easter 2021.

If you are not in agreement please ring 01449 720568 with your alternative proposals.

Stay safe.

May Aldred.



St. May's Church Ride and Stride

The annual sponsored cycle ride for the Suffolk Historic Churches Trust.

Saturday September 12th

We I have heard today (20th) that this can now go ahead. Hazel Mackintosh is our local organiser for Creeting St Mary.

Please contact Hazel on 720753 for more details and forms. You can either cycle round your choice of churches or visit them on foot. We hope that you will be as generous as usual with your sponsorship.

Half the money raised will go to the Trust to keep Suffolk Churches in repair and half to the Church of your choice.

Nigel Smart Deanery Organiser.



CREETING ST MARY SOCIAL CLUB (CSMSC)

csm_socialclub@outlook.com

The Diamond Jubilee Village Hall **The Village Hall will reopen again from July 27th**

Bookings can be accepted and full Corvid precautions will be in place. The new heating has been commissioned and a deep clean is being undertaken.

Chris Bingley (Chair) Tel 01449 720324. christine.bingley@gmail.com

Only the main hall and toilets are open at present, NOT the bar, or the small meeting room or kitchen. There is WIFI and a large car park behind the Hall. Details and bookings can be found on the village website or ***contact Richard Hyde, Booking Clerk , 01449 720024***

CREETING ST MARY SOCIAL CLUB

In common with so many organisations the Social Club has had a very quiet early summer. Now that the Village Hall is making tentative steps to re-opening to bookings, we too are starting to explore how we can provide events in the hall and on the field once again. Plans are at present in a very early stage, but we hope that an outdoor event may be possible whilst the weather is still summery. Unlike many of the village committees we have not resorted to Zoom meetings, but have kept in touch by phone and e-mail, preferring to wait till we can get together as a small group for an outside, distanced, committee meeting.

Discussions are also ongoing about the possibility of holding our regular firework display with the support of the Parish Council.

Things may be different but we will be back.

Kathryn Martin Chairman.

Opportunity for a Communications Volunteer

Creting St Mary Social Club are looking for someone who would be prepared to help the committee with publicity for club and village events. Expertise and familiarity with social media is the main requirement for this task so that we can spread information about our activities and encourage more people to join us. It should not take a great deal of time. Good communication skills are what we are looking for.

Please contact Kathryn Martin or Jacqui Mann or email the club.

REPORTS TO THE ANNUAL PARISH MEETING (APM)

Once a year organisations in the village are invited to present a report of their activities to the Parish Council. This year it was conducted via Zoom. These will be featured in the newsletter over the year

Creeting St Mary Diamond Jubilee Village Hall Management Committee 2020 Report to the APM

I can report that our Hall had been in a good place, until the Lock Down commenced in late March. We had a good level of bookings, both regular users and party and event bookings. In particular a 4 day booking for the Public Enquiry, which was closed and then subsequently re- booked.

The Committee have been working steadily towards making a replacement of the Heating system in the Hall. This has been starting to become unreliable and in need of modernisation. Finding three estimates from companies compatible to the job was not easy and then we went into the area of grants. The situation now is that we can go ahead subject to the agreement by Biffa to our largest application. It will be an ideal time to get this work completed when the Hall is out of use. We are hopeful that practically all of the costs will be covered.

We were sorry to miss out on the annual visit by Eastern Angles, which had to be cancelled just as the Hall was facing closure.

A sub Committee has worked hard to complete the updated Constitution and this is now in place. This was not an easy or straightforward procedure. Mrs May Aldred remains in our employment and is receiving a very minimal monthly retainer while her services are in suspension.

I would like to thank our Committee for the work they have put in over the last year, both in the endeavours I have just mentioned and also in a practical sense where repairs have been made and maintenance undertaken at a good saving to our resources. We hope that our Hall will be open again in the not too distant future, providing as it does a valuable village and community facility.

Chris Bingley (Chair)

Creeting St Mary Diamond Jubilee Village Hall.

Cleaner required. 4 hours per week.

For details please phone Chris Bingley 01449 720324

BLACKSMITH'S FIELD ANNUAL REPORT TO THE APM

At this time the coronavirus lockdown has meant the play equipment in the field is out of bounds. However, walkers, joggers and dog walkers can still take advantage of this beautiful open space.

The entrance to the field remains good. However, the hedge at the start of the footpath has been severely cut back which has exposed the ditch. A request has been made to erect a fence to protect children. Some of the original equipment in the Play area has been identified as unsafe and quotations have been obtained to replace this. At the same time we have also obtained quotes for a trim trail. At the last meeting of the Parish Council the Sovereign estimate was accepted and it is hoped they will commence work by the middle of July.

The Blacksmiths Field Play Equipment Committee will now be looking at fund raising for other items to improve the use of the field.

William Barnes, with a small working party, has been trying to eliminate the ragwort in the meadow in order to be able to cut, bail and sell the hay in the future. However, this is proving to be quite a task and he will continue to work on this problem throughout this year.

A donation was made to the village of Bosch garden equipment. The Parish Council have looked at the best way to keep this and also other item that the Village Hall and Social Club need to store. After discussion a container was agreed and this has now been placed in the car park.

A few saplings were planted in various spaces around the field, which are all doing well. The pond is looking healthy. The number of dogs fouling the field has significantly reduced this year, but it is still not completely without incidents.

It is hoped that people will continue to bring their dogs to the field, but be responsible and considerate to others. There are various bird boxes around the field, including an owl box at the bottom.

The den building equipment is now very sparse and will need to be replenished.

The firework night was a success. However, with the uncertainty around social gatherings due to the coronavirus, a decision will be taken by the Parish Council in the summer as to whether this event will be allowed this year. If it does go ahead the Social Club have agreed to ensure further safety measures are put in place.

Cllr Jan Palmer

DAVID ALEC SQUIRRELL

26th February 1947- 2nd May 2020

His daughters write:

David was born at 30 All Saints Road in the severe winter of 1947. He was the youngest of seven siblings, son of Oli and Sybil Squirrell. He spent his entire life in Creting St Mary, as a child living in Creting Hills before settling in St Mary's Road with his beloved wife Ann.

David joined the Eastern Electricity Board at the age of 17 and spent his working life as an overhead linesman, working closely with his brother Paul. He married Ann in 1967 and had three daughters, Alison, Joanna and Katie. Ann and David enjoyed happy marriage for over 50 years before Ann sadly passed in 2017. David was incredibly proud of his two grandsons, Oli and Billy and greatly enjoyed spending time with them.

David was a football fan and followed Ipswich Town and Needham Market FC. He loved his garden and spent many a happy hour working in it. More recently he had taken up golf although this was proving a challenge! Always willing to help friends and family.

David regularly volunteered within the community supporting Ann in her Parish Clerk duties as well as delivering prescriptions for the local pharmacy. The family were extremely touched and grateful to those members of the village, past colleagues and friends who came to pay their respects as he was laid to rest on May 26th. He will be sadly missed by his family and friends.

Ed.: Because of Covid-19 restrictions many were unable to go to the church, Instead they lined the route to pay their respects. Circumstances have changed but we find ways of doing the important things.



Creeting St. Mary Voluntary-aided Primary School

As we approach the end of the academic year 2019-2020, it will be a year that we will remember forever. The challenges for parents educating their children at home whilst trying to work themselves from home have been huge. However, we are holding on to the memories that families have made by having this extra time together. We have heard of lots of positive experiences and appreciation for the simple things in life which we all take for granted and are incredibly proud of how our children rose to the expectations placed upon them. The whole school community has worked fantastically well together and since the school reopened in June we have been able to welcome back 58 of a maximum 60 children into Reception, Year 1 and Year 6. Parents have been extremely supportive and understanding of the limitations that have been placed upon us and we have very much appreciated this.

We were delighted that our Year 6 children were able to return to school and complete their time with us. They have made a leavers' video and each of them have been given a leavers' hoodie, kindly donated by the PSA, as well as putting their thoughts together in a leavers' book as a keepsake for their shared memories of the school. We will be holding a virtual leavers' service for them and their parents on the last day of term and we wish them all every happiness and success in the future.



Head Mrs. Christine Friar

School telephone 01449 720312, office@creetingstmary.suffolk.sch.uk
www.creetingstmary.suffolk.sch.uk

MOBILE LIBRARY

Route 13 at Creting St. Mary

The mobile library bus made a welcome return to the village on Friday 10th July, back on it's usual schedule after the enforced three month absence. Prompt as always, advisory notices on the doors, hand sanitiser provided and a limit of 4 books per borrower, but otherwise unchanged.

Browsing books is permitted, as opposed to the branch libraries - only open for booked collection of orders - all books are quarantined on return.

Suffolk Libraries have expanded their online facilities over the lockdown, increased the range of e-books available and revamped the website. But there is nothing like a real paper book to many of us.

You can join (for free) or renew membership and there is a reasonable selection of books on board. Books can always be ordered from the main library. This somewhat under-used service can be a lifeline to many - we should support it.

Suffolk Libraries' mobile library stops at Whissel's Farm at 11.20-11.30 and outside 30 All Saints Road at 11.35-11.45 on Friday every four weeks:

August 7, Sept 4, Oct 2 and 30, Nov 27 with no visit in December.

<https://www.suffolklibraries.co.uk/mobiles-home/ipswich-mobile-library-route-13/>

Kathryn Martin

A Bit of History – What's in a Name?

Have you wondered why St Marys Church, the now demolished All Saints Church and the historical St Olaves churches in Creeting are named so?

St Olave's Church was situated, I understand from Nigel McBeth, (*Ed: who participated in an archaeological exploration of the site some time ago*) just a few yards to the left of FP7 which rises opposite Woolney Hall and goes in an easterly direction towards the village. All Saints Church was approximately 100yds or so south east of the south porch of St Mary's Church.

By the fourth century it was common practice to dedicate a Christian place of worship to one or more patron saints. Once the Church was established in England it became practice to dedicate a new church's patron saint during the act of consecration by the diocesan bishop, and in fact mass could not be held in a building until the consecration act had taken place. There is much evidence of the dedication of churches prior to 800, with most being dedicated to Saint Peter and Saint Mary. The most common dedications in the Church of England (according to https://en.wikipedia.org/wiki/Dedications_in_the_Church_of_England) are St Mary – 2368; All Saints – 1467; St Peter – 1327.

The most popular saints in terms of numbers of dedications demonstrate the influence of Rome on the history of English Christianity, as well as being major characters in Biblical studies, with the most popular being St Mary, St Peter, St Michael, St Andrew, and St Paul.

In the seventh century, Pope Boniface IV officially established All Saints' Day in order to honour all of the saints at one time. All Saints Church in Creeting was founded before 1538 and closed before 1800.

What about St Olave? Olaf II Haraldsson (c. 995 – 29 July 1030), later known as St. Olaf (and traditionally as St. Olave), was King of Norway from 1015 to 1028. He was canonised at Nidaros (Trondheim) by Bishop Grimkell, one year after his death in the Battle of Stiklestad on 29 July 1030. His remains were enshrined in Nidaros Cathedral, built over his burial site. His sainthood encouraged the widespread adoption of Christianity by Scandinavia's Vikings/Norsemen. Olave was the traditional spelling in England, preserved in the name of medieval churches dedicated to him. Several churches in England were dedicated St Olave - the name was presumably popular with Scandinavian immigrants.

Paul Scully Tel: 01449 721461 e-mail: paul@impressions41.plus.com



**HOUNSFIELD
BOILERS**



Domestic Oil-Fired Boilers

Made in Needham Market

Short listed for a prominent national award.



The H & V News Awards, is a show case for the very best products within the heating industry.



Tel.: 01449 722461
www.hounsfieldboilers.co.uk





DR DAN POULTER MP

Member of Parliament for Central Suffolk and North Ipswich

Lockdown has perhaps given us all the opportunity to rethink how we live our lives and what we value most about living and working in Suffolk. For me, I am incredibly proud of our rural heritage, the fantastic Suffolk countryside and the great community spirit that is evident in all our towns and villages.

As the COVID restrictions start to lift and our local shops and pubs have cautiously begun to reopen, we must now turn our attention to protecting jobs and supporting our economy to slowly start to recover. With smaller, independent retailers needing our support, it is perhaps more important than ever that we all take the opportunity to support our great Suffolk farmers, food producers and retailers, who have been working throughout the COVID pandemic ensuring that high quality, local produce is available in our local shops and communities.

Recently, there has been much interest in the matter of food safety and animal welfare standards and a number of you may have already been in touch with me directly. Contrary to media reports that UK food standards will be lowered as part of future trade deals, I want to reassure you that the Government will not compromise on our impeccably high standards of food production and animal welfare. The amendments which have been widely reported would consequently have created new trade barriers, potentially preventing the Government from being able to agree fair and mutually beneficial trade deals. The UK's food standards, for both domestic production and import, are overseen by the Food Standards Agency and Food Standards Scotland. These are independent agencies and provide advice to the UK and Scottish Governments. They will continue to do so in order to ensure that all food imports comply with the UK's high safety standards. Decisions on these standards are a UK matter separate from any trade agreement.

Here in Suffolk, and around the UK, we should be proud of our world-leading food, health and animal welfare standards and we simply must not lower our standards as we negotiate new trade deals. Any trade deal the UK strikes must be fair and reciprocal to our farmers and must not compromise on our high environmental protection, animal welfare and food safety standards. I am therefore pleased that the Government has, in principle, agreed to the establishment of a Trade & Agriculture Commission. The Commission will ensure the importance of close engagement with the agricultural sector, which will help to inform, shape and guide our agricultural trade policy. This news has been welcomed by the NFU, with whom I regularly meet, and I will continue to fight for the best interests of our farmers here in Suffolk.

Tel: 0207219 7038 www.drdanielpoulter.com
daniel.poulter.mp@parliament.uk

Footpaths and Bridleways

At this time of year, walking our footpaths can be a bit tiresome with overgrown grass, weeds, bushes etc doing their best to prevent walker's progress. Often the landowner whose land is either adjacent to the FP or who owns the land across which the path runs, will trim the vegetation but this can't always be relied upon. On occasions where it's been nigh on impossible to make way through the undergrowth I have had to report the situation to the Highways Department of Mid Suffolk District Council to clear. On the other hand, we are fortunate in our parish to have landowners who are considerate and keep the paths fairly clear but if you carry a pair of secateurs with you and can cut away some of the nasty brambles that would be very helpful, thank you.

In general, our network of Footpaths and Bridleways are fairly easy to walk along but please let me know if you come across one that's not. Also, for your information, I've summarised the use of Public Rights of Way but please remember that this is a summary only – see <https://www.gov.uk/right-of-way-open-access-land/use-public-rights-of-way> for full details.

Uses of public rights of way:

- footpaths - walking, running, mobility scooters or powered wheelchairs
- bridleways - walking, horse riding, bicycles, mobility scooters or powered wheelchairs
- restricted byways - any transport without a motor, mobility scooters or powered wheelchairs
- byways open to all traffic - for any kind of transport, including cars (but they're mainly used by walkers, cyclists and horse riders)

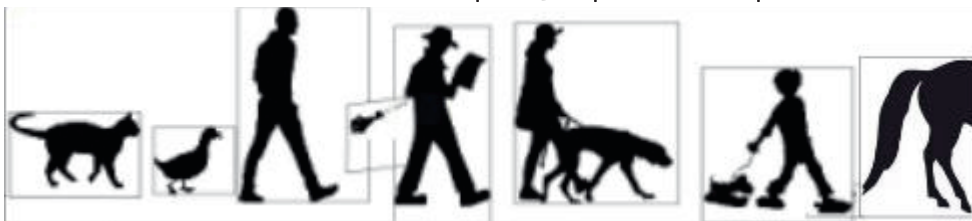
In addition,

- you may take a dog with you, but you must keep it under close control
- You may take a short route round an illegal obstruction or move it sufficiently to get past

Remember there are a couple of leaflets covering walks along the River Gipping which can be picked up from the old telephone kiosk in Jack's Green Road ("Local Walks" information point) and from the notice board by Hawks Mill Bridge. The former has a map of the Creeping walks on the side wall.

Paul Scully July/August 2020

Tel: 01449 721461 e-mail: paul@impressions41.plus.com



By The Way...

Now the 2020 F1 motor racing series is underway at last, I read an interesting bit of news about one of the racing teams the other day, it said: "The Ferrari F1 One Team Fire Their Entire Pit Crew". This announcement followed Ferraris' decision to take advantage of the British government's "Work for your Dole scheme" and employ some Liverpoolian youngsters. The decision to hire them was brought about by a recent documentary on how unemployed youths from Toxteth were able to remove a set of wheels in less than 2 seconds without proper equipment, whereas Ferrari's existing crew could only do it on 3 seconds with millions of pounds worth of high tech equipment.

It was thought to be an excellent bold move by the Ferrari management team as many races are won and lost in the pits and would give Ferrari an advantage over every other team.

However Ferrari got more than they bargained for! At the crew's first practice session not only was the Scouse pit crew able to change all 4 wheels in under 2 seconds but within 12 seconds, they had resprayed, re-badged and sold the car to the McLaren team for 8 cases of Stella, a bag of weed and some photos of one of the driver's birds in the shower.

Paul Scully July/August 2020

Tel: 01449 721461 e-mail: paul@impressions41.plus.com



Where is this?

I am sure many of you are exploring the village footpaths more often - so do you know where this road leads? (answers p. 33)

Thanks to Chris Bingley and Lizzie

FREE TREE GIVE-AWAY

The woodland trust are running this scheme again this year. So if anyone would like free native trees (oak, birch, hornbeam, maple, cherry, lime etc) then please let me know.

While the details of this year's offer are unknown it is likely to be the same as last year where the village will be given up to 100 trees, and up to 75m of free mixed hedging. Further to that there are landowner packs of 90 trees and a very generous 75% off for farmers and land owners buying more trees and hedging.

Please contact Hugo Craggs
hugocraggs@gmail.com 7815137228



Sudoku -fiendish

Like an easier one? Let us know.

Complete the grid using the numbers 1-9 using each number only once in each row, column or 3x3 box. Solution p. 33.

	6		3		7			5
7		5			8		2	1
						3	7	4
		3	5		6	1		
1	7	2						
5	4		2			6		3
8			6		3		4	

RAINFALL IN IP6 8 area 2020

Month	Rain in mm.
<u>MAY</u>	<u>1.0</u>
Last Year	46.0
Total this Year	187.0
12month cumulative	701.0
10 year Average for May	40.4
Wettest - May 2014	108.0
May 2020 driest May ever recorded in UK	

RAINFALL IN IP6 8 area 2020.

Month..	Rain in mm.
<u>JUNE</u>	<u>71.0</u>
Last Year	95.0
Total this year	258.5
12 month cumulative.	686.5
10 yearAverage for June	51.0
Wettest 2016	123.5mm
Driest 2015	15.5mm

Creeting St. Mary Women's Institute



As you may have guessed, all our meetings, normally in the village Hall, have been postponed for the present time.

Where possible, our members have kept in touch by email among ourselves and also via our Suffolk Office, where Zoom link ups and help have been offered.

It may be possible for us to have a rather later than usual Garden Meeting - but no definite plans are yet in place as I write.

We look forward so much to being able to resume our programme of meetings and to meet our WI friends again.

Chris Bingley (Chair)

Tel 01449 720324. christine.bingley@gmail.com

Needham Market and District Horticultural Society

After careful consideration, the Committee of NM&DHS have decided to cancel all the remaining meetings, outings and events in 2020. The Committee will have a socially distanced garden meeting in August to agree the programme for 2021. Many speakers unable to visit us in 2020 have agreed to come next year. Some outings will also be to the venues in the current programme, with exciting additions.

It is anticipated that membership will be confirmed as rolling over for 2021. We very much look forward to welcoming back members for our AGM in February 2021.

We normally meet on the first Thursday of the month at Needham Market Community Centre at 7:30 p.m.

Membership cost just £5 in 2020 payable at an event. This includes 9 speakers and outings to special gardens.

Our annual supper is held in mid-October at a local restaurant.

Please keep in touch.

Hazel Mackintosh, Joint Events Co-ordinator 01449 720753



Professional :: Friendly :: Competitive :: Fully Insured
Tree Work Specialists, Fencing & Garden Services

Tel: 01449 722795

Mobile: 07825 678760

Email: info@arctreesurgery.co.uk

www.arctreesurgery.co.uk

You Grow It, I'll Mow It!

Grass Mowing
 Hedge Trimming
 Strimming
 Turfing
 Fencing



Call Nigel (01449) 721025

P B S Plumbing & Bathroom Services



A Reliable & Friendly Local Service

Bathrooms, Showers, Kitchens & Radiators.
 All Household Plumbing Requirements.
 Maintenance & New Installations.

Mobile - 07870 989 422.

Evenings - 01449 720095.

* FREE ESTIMATES * ALL JOBS CONSIDERED*
 **AVAILABLE EVENINGS & WEEKENDS **

Rosie Hancock

Certified in Reflexology,

Indian head massage,

Swedish Massage

Also Private Physiotherapist

01449 614308

or 07947787343

HIGH FLYERS EQUESTRIAN & COUNTRY CLOTHING



ARIAT®



dubarry
 of Ireland

Schöffel

FAIRFAX & FAVOR
 ENGLAND



AIGLE

MUSTO®
 PERFORMANCE



We also stock a selection of
Horse Feed/Bedding/Supplements,
Dog Food, Bird/Chicken Feed

HIGHFIELDS FARM, BATTISFORD,
 STOWMARKET, SUFFOLK IP14 2HL

TEL: 01449 722122

WWW.HIGHFLYERSCLOTHING.CO.UK

HIGH FLYERS SELF-STORAGE

20' X 8' X 8' CONTAINERS

(1,172 CU.FT)

**AVAILABLE
 FOR RENT**

HIGHFIELDS FARM, BATTISFORD,
 STOWMARKET, SUFFOLK IP14 2HL

TEL: 01449 722122

WWW.HIGHFLYERSCLOTHING.CO.UK



Suffolk Wildlife Trust Stowmarket Group

Some events are being planned -

please see the website or contact John Thompson

We are a group of volunteers who care deeply about wildlife, for its beauty and diversity and importance to everyone's existence. We support the Trust's aims and vision for a Living Landscape - with nature reserves, Sites of Special Scientific Interest and County Wildlife Sites forming networks of linked-up habitat.

We look after local wildlife reserves:

Work parties maintain Combs and Bonny Woods

SWT Magazine is delivered to local members, saving postage costs.

We organise local events: talks at Stowupland village hall and guided walks. The complete programme can be downloaded from www.suffolkwildlifetrust.org/wildlifegroups

Our local reserves:

Combs Wood, Bonny wood, Bradfield Woods, Bull's Wood, and the Blackbourne Valley.

Our nature reserves remain open for local enjoyment, but please observe Government Advice on accessing Green Spaces:

<https://www.gov.uk/government/news/coronavirus-guidance-on-access-to-green-spaces>.

Suffolk Wildlife Trust offices, centres and hides are gradually re-opening. See the website for updates. www.suffolkwildlifetrust.org

John Thompson 01449 676471 swtstowmarket@gmail.com

The Big Butterfly Count – Butterfly Conservation **Between Friday 17 July and Sunday 9 August**

This is a UK-wide survey aimed at helping assess the health of our environment simply by counting the number and type of butterflies (and some day-flying moths).

Download the handy butterfly ID chart or free app for iOS and Android to identify and record those you spot.

Watch for 15 minutes and record which species you see.

Do this as often, and in as many places as you like.

Add your counts on the website or via the app and look at the interactive map to see how your data is contributing to conservation science and research.



**Delicious
homemade
cheeses, Guernsey
milk and home-
reared beef.**



Sales off-farm Fri 4-6pm, Sat 3-5pm or
collection by prior arrangement.

Whitegate Farm, Norwich Road, CSM

WHITEGATES DAIRY FARM OPEN DAY SUNDAY 16th AUGUST

Due to the disappointment of not
being able to host Open Farm Sunday
this year, we have decided to host a
very small, invite only open
morning/afternoon

The format will be a guided farm tour, followed by cheese-tasting. The farm
shop will be open exclusively for visitors, and there will be refreshments.

Tours are at 10am, 12noon and 2pm for a maximum of 20 adults per tour.

Please note that this event will be strictly booking in advance and we will
need to keep contact details. Social distancing guidelines will be followed.
We look forward to welcoming you to the farm!

Tickets £5 each, under 12s free. To book your ticket visit the farm shop,
email us at enquiries@suffolkcheese.co.uk, message us on Facebook
@suffolkcheese or call Katharine on 07931 512790

SUFFOLK CHEESES MOBILE SHOP

Will be at the Village Hall every Tuesday at 10am with a selection of
produce including milk, butter, cream, cheeses, eggs, bread, fresh
vegetables and meat, which we will be selling from our livestock trailer.

For those self-isolating, we will be able to deliver to the door, please call
Katharine 07931 512790 to arrange this.

NEEDHAM MARKET PACKED LUNCHES

If you live in Needham Market, Barking or the Creetings and if your
child/children would normally get free school meals, we can provide you
with food packs during the school holidays. These are delivered 3 times a
week and contain sufficient ingredients for a lunch for each child, all
delivered to your door. All FREE OF CHARGE. It's not charity, its helping
neighbours get through stuff.

Text or ring Dawn on 07513122231



Mid Suffolk

My mum has a non-visible disability, which causes her walking difficulties. I heard something on the news about how she may now be eligible for a blue badge. How can I find out about this and help her apply?

On 30 August 2019, the Blue Badge scheme was extended to people who live in England and have non-visible disabilities or conditions which affect their ability to walk. As a result, your mother may now qualify for a badge.

Your mother will be automatically eligible if she gets certain types of benefits. These include some categories of Personal Independence Payment and the higher rate mobility component of Disability Living Allowance.

If she's not automatically eligible she can still apply for a badge. Her local authority will use evidence from

doctors and other healthcare professionals to determine whether she qualifies or not.

Your mother can check her eligibility and apply for a local authority-issued Blue Badge at gov.uk/apply-blue-badge. If she can't do this herself, you can apply on her behalf.

You'll need a recent digital passport-style photo, proof of her identity, address, details of any benefits she receives, her National Insurance number, and evidence of how her non-visible disability or condition affects her mobility.

Citizens Advice Mid Suffolk can provide advice on this or any other issue, including debt, housing, benefits and family law.

You can contact them on 01449 676060 or go to the Advice Centre on 5 Milton Road South, Stowmarket. For more information and our opening hours go to midsuffolkcab.org.uk.

Needham Market Country Practice

What you need to know to access our services safely

From May 2020 all appointments with a doctor need to be made via our eConsult service. This is a secure, clinical, on-line service which can be found on our website: www.needhamsurgery.co.uk or via the NHS app. You do not need a log in or password to use this service. If you do not have internet access a member of the reception team will be able to help by processing an eConsult on your behalf. Please call 01449 720666 and select option 2.

For Nurse or Phlebotomist, appointments either use eConsult requesting via the admin pathway or call us on the usual number to book.

We are asking patients NOT to visit the surgery unless you have

1. A pre-booked appointment with us
2. Need to collect from our dispensary

When you do come to the surgery we ask that you wear a face covering when on the premises and try not to arrive too early for your appointment to support social distancing in the waiting room.

If you have a mobile phone you may be asked to wait in your car. If you have a nurse or GP appointment and they will call you in directly when they are ready for you.

The Practice is strongly encouraging all patients to purchase their own personal items for use such as a Home Blood Pressure monitor, Pulse Oximeter, and Digital Thermometer. These items are inexpensive and widely available from any pharmacy or online. They will not only be a useful addition to the home first aid kit but play a vital role in self managing healthcare issues and will enable you to report accurate readings to healthcare professionals either via our online services or during telephone consultations.

If you have any questions or concerns having read this, please do not hesitate to contact us on 01449 720666.

ROOFLINE - PLUS



Look Up !

BUILDING & ROOFING CONTRACTOR

**CHIMNEYS REPOINTED
REBUILT/REMOVED**

HOUSE/WALL REPOINTING

**FASCIA REPAIRS
GUTTERING/ROOF REPAIRS**

**30+ YEARS EXPERIENCE
ALL WORKS GUARANTEED**

**FOR FRIENDLY ADVICE AND
A FREE CONSULTATION CALL**

01449 763218 - 07500 823292

**THIS SPACE
COULD BE
WORKING FOR
YOUR
BUSINESS
see p. 39
for details**

VILLAGE WALKS - WHERE IS IT?

Page 25 - On the lane heading towards the A14 just past the steps up to the church.
Ed: I have heard this road referred to as Church Lane, Low Lane, Blogg's Lane (by a very old resident) as well as The Lord's Highway!

If you don't have one - invest in Ordnance Survey Explorer map 211 Bury St. Edmunds and Stowmarket; consult the village website or look at the local footpath maps in the old telephone box at Jack's Green and the notice board at the entrance to Alder Carr Farm.

SODUKU SOLUTION

2	6	4	3	1	7	8	9	5
9	8	1	4	2	5	7	3	6
7	3	5	9	6	8	4	2	1
6	5	8	1	9	2	3	7	4
4	9	3	5	7	6	1	8	2
1	7	2	8	3	4	5	6	9
5	4	7	2	8	9	6	1	3
3	2	6	7	4	1	9	5	8
8	1	9	6	5	3	2	4	7

Castell Carpentry

Doors Supplied & Fitted
Shelves & Storage
Cupboards & Cabinets
Fitted Furniture

Call Tom 0757 900 8271
tom@castellcarpentry.co.uk



Old press photograph found in the USA

I thought your village might like to see this picture, which I recently acquired. It arrived the other day from Memphis, Tennessee - it's an Ipswich trolleybus being thatched by Harry Steward, a 76 year old thatcher at Creting St. Mary in Suffolk. It was his home on a small holding there at the time. The date is Cleveland Press Nov 15 1951. How this 10x8 ended up in the States I have no idea! I wonder what happened to No. 47?!

Tony Griffin, Derby.

HAROLD STEWARD AND HIS BUS

The photo of this man piqued my interest so I decided I had to look into his life, not in a dusty archive or on a screen, but talking to people in their gardens. Paul Squirrell, who remembered the man, known as Whoopee, pointed me in the direction of Malcom Stewart, his grandson.

Henry Stewart was born on 10th April 1878. At some future date his mother remarried and his new stepbrother shared both his names. So Henry Stewart became Harry Steward.

He worked as a tenant farmer for many smaller landowners on the edges of Needham Market and Creting, based in Lion Barn Farm House, the house still standing on the Lion Barn Estate. The barn which gave the estate its name is thought to be in storage. Harold acquired the contract for the night soil collection round from the Rural District Council in the days before mains drainage, when his horse drawn vehicle toured Needham Market emptying the buckets and pails from the households' privies. His stop command to his horse was whoopee, hence the nickname. On one very dark night a tragedy occurred when a Mr Webber, Harry's assistant died in a road accident close to the Alms Houses, the site still marked by an arrow on the wall. The waste was deposited on an isolated site to dry out before being sold to farmers for use on the land. Harry also farmed pigs, chickens and was a horse dealer, and worked as a thatcher.

Harry owned a strip of land on the Creting side of the river near where the Mustard Pot and the sewage treatment station now stand. It was on this site that he went to live when his son, who shared the main house, remarried. He converted the No 47 to a cosy home, with stove and chimney at the cab end, and a kitchenette where passengers once alighted. Also in the picture is a ledge top Romany wagon which he moved into after some years when another son moved into the bus.

In later life as he became frail Harry moved in with his son Charlie Stewart, Malcolm's father, who was the tenant of The Rampant Horse for 23 years, finally dying in Stow Lodge on 26th November 1960. He is buried at Bramford.

My thanks are due to Paul and to Malcom for spending time with me sharing their memories of a very different age.

Kathryn Martin.

WILLIAM J CROCKER

PAINTING &
DECORATING
SERVICE



TEL: 07814 240840

WWW.WJCPAINTERS.CO.UK

EMAIL: WJCPAINTERS@HOTMAIL.CO.UK



07786 381682

**Anglia Garden Design
&
Landscaping**

For a friendly service call Sharon

07786 381682

www.angliagardendesign.com

STOWE VETS

Summertime safety

Heatstroke, dehydration, grass seeds, and BBQ items are all common dangers that our pets might encounter in the summer months. Here are our top tips for keeping your four-legged friends safe from harm.

Grass seeds

Grass seeds are a common problem at this time of year. They are found on the ends of long grass stems and can brush onto your dog while out on a walk. Tiny in size, they can get into your dog's ears, eyes and paws and can work their way under the skin. Signs that your dog might have a grass seed might be head shaking (if a seed has found its way into your dog's ear) or licking at the paws (if one has lodged in between his pads). To protect your dog, keep the hair around his pads and ears short to reduce the chance of a grass seed sticking, and always inspect your dog's paws and legs after a walk.

Heatstroke and dehydration

Help keep your dog safe during hot weather by going for walks at cooler times of the day, and make sure that all pets have access to fresh water at all times. Pets with thick fur will need regular grooming to prevent overheating and, for small pets like guinea pigs and rabbits, ensure their hutches are placed in shady areas so they can stay cool. If you suspect your pet has heatstroke, move them into the cool, wet their coat with cool (not cold) water and seek veterinary advice.

Dogs die in hot cars

Never leave your dog in a hot, or even warm, car. Even if the windows are cracked open, the temperature inside can rise within minutes, and your pet will be unable to cool himself down. If you are in any doubt about whether you can take your dog into your chosen destination, leave him at home.

BBQ food

It is vital to keep BBQ food well out of the reach of dogs, especially sweetcorn husks and kebab skewers which can cause choking, blockages and internal injuries. Remember to keep alcoholic drinks well out of your pet's reach, too – while alcohol is poisonous to dogs - a thirsty pooch may not hesitate to help himself to a tipple.

Veterinary services during coronavirus outbreak

Please don't walk into the practice. We need to keep everyone safe.

All clients are being offered video or telephone consultations

Services we are currently providing:

- the treatment of ill pets
- essential vaccinations
- essential operations
- emergency service
- supply of animal medicines and supplements
- repeat medications
- delivery of pet food
- Doorstep deliveries, contactless collection or postage.

Self-isolating clients please call the surgery.

If you are concerned about your pet's health, please contact

Stowe Veterinary Group in Stowmarket on 01449 613130.

The Mustard Pot Surgery- 01449 722198



Creting St Mary
 Photograph taken from the air ambulance by
 Dr. Nicola Ebbs, Summer 2019

For Sale

Copies of this wonderful photo taken by Dr Nicola Ebbs from the East Anglian Air Ambulance are available for sale with the proceeds going to the East Anglian Air Ambulance.

Prices:

A4 format £25 framed (plain black) - £20 unframed

A5 format: £15 framed - £10 unframed.

£5 from each sale will be donated to the air ambulance.

To order copies please contact: Steve Fernie at Creting House (opposite the church)
steve@cretinghouse.com or phone 01449 720988




The Limes Hotel,
 Needham Market
 is under new management!
 Open Daily from 11am for:

Teas & Coffees, Lunches & Light Bites,
 Evening Meals & Drinks in Bugs Bar.

We also have a fantastic party venue,
 meeting room, 11 bedrooms & ample parking.

Call 01449 798401 or just pop in!



SUFFOLK

GARDENING THYME

Mowing, Planting, Pruning, Training,
 Hedges, Tidying, Feeding

07736 348 545 | [@suffolkgardeningthyme](https://www.suffolkgardeningthyme.com)
suffolkgardeningthyme@gmail.com

GENERAL INFORMATION AND CONTACTS

Creeting St Mary Newsletter:

Editors

Content: Joan Hardingham, Alder Carr Farm,
creetingnewsletter@gmail.com

Liaison with contributors and advertisers:

Kathryn Martin,
creetingnewsletter@gmail.com

Advertising: Jennie Blackburn 01449 721369
clerk@csmnpc.co.uk

(Advertising rates are on page 35)



Distribution: Kathryn Martin 01449 720491

Newsletter deadlines: the 20th of the months of:

September (Oct-Nov edition i.e. early December and Christmas events)

November (Dec-Jan edition)

January (Feb-Mar edition)

March (Apr-May i.e. Easter)

May (Jun-Jul i.e. all those mid-summer events)

July (Aug-Sep - the summer holiday events)

Creeting St Mary Parish Councillors

Name	Portfolio
Sue Haynes	Chair and Village Hall - 01449 722570
Hugo Craggs (Vice-Chair)	CIL and Sustainability- 07815137228
Roger Coton	SALC - 01449 721526
Paul Scully	Footpaths and Bridleways - 01449 721461
Nigel Smart	01449 720100
Jan Palmer	Blacksmith's Field - 01449 723997
Lesley Plummer	01449 720359
Chris Emmins	07894231165

To contact any of the parish councillors, please contact the Parish Clerk first

Parish Council Clerk : Jennie Blackburn - 01449 721369

or email: clerk@csmnpc.co.uk

Meeting agendas and dates are placed on the village noticeboards during the week prior to the meetings, and also on the website.

Creeting St Mary Website

Alastair Rogers: 01449 720580 a.s.rogers@qwic.co.uk;

www.creating-st-mary.suffolk.gov.uk

Diamond Jubilee Village Hall

Chris Bingley (Management Committee Chair) 01449 720324.

christine.bingley@gmail.com

To hire: Richard Hyde Tel: 01449 720024; creetingjubileehall@gmail.com

Creeting St Mary Social Club: csm_socialclub@outlook.com.

Creeting St Mary Neighbourhood Watch Representatives:

Bill Mackintosh: 01449 720753

Sue Haynes: 01449 722570

Creeting St Mary Footpaths Paul Scully 01449 721461

e-mail: paul@impressions41.plus.com

Creeting St Mary Welfare Charities Mr. D. Primmer, 30 All Saints Road,
Creeting Saint Mary, IP6 8NF 01449 721514

County Councillor for the Thredling Division: Matthew Hicks

Tel: (01728) 628176 ; matthew.hicks@suffolk.gov.uk ; Twitter: @HicksCllr

Mid Suffolk and Baburgh District Councillors:

Mike Norris - mike_norris@hotmail.co.uk 01449 720871

Steve Phillips - steve.179@icloud.com 01449 721710, mob. 07794823323

Member of Parliament for Central Suffolk and North Ipswich

Dan Poulter Tel: (01728) 726588 ; daniel.poulter.mp@parliament.uk

Twitter: @drdanpoulter

Creeting St, Mary Primary School - Head Mrs. Christine Friar

School telephone 01449 720312, office@creetingstmary.suffolk.sch.uk

www.creatingstmary.suffolk.sch.uk

Rev'd Philip Payne, Priest-in-Charge North Bosmere Benefice

The Rectory, The Street, Stonham Aspal, IP14 6AQ

01449 711684 revphilippayne@btinternet.com

CSM Newsletter – Advertising Costs

Bi-monthly issues (June/July; Aug/Sept;

Oct/Nov; Dec/Jan; Feb/Mar; Apr/May)

Deadline 20th of month previous.

One insertion (depending on space)

Full page - £20

1/2 page - £15

1/4 page - £10

1/8 page - £5

Series of 6 adverts:

Full page - £108.00 (inside) / £125.00p.a.
(outside)

1/2 page - £75.00

1/4 page - £48.00

1/8 page - £24.00

An editorial piece about your business
(approx 100 words) can be put in annually.

The Mustard Pot Veterinary Surgery

For a professional caring service



Tel: 01449 722 198

Coddenham Road, Needham Market, IP6 8NU

A member of Stowe Veterinary Group
www.stovevets.co.uk

